

Consumer Price Index, base period June 2019

November 2024

The Central Bureau of Statistics presents the most important findings for the Consumer Price Index (CPI) for the month of November 2024.

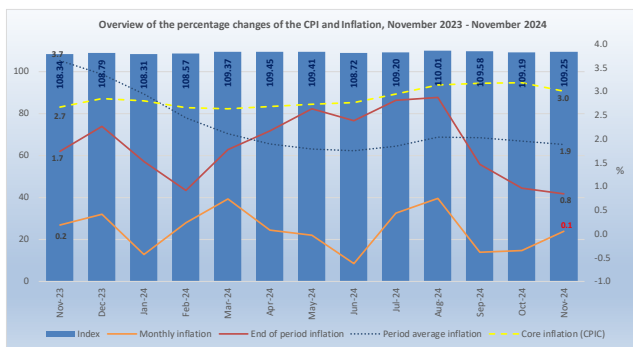


Consumer Price Index for the month of November 2024

The CPI for November 2024 (109.25), shows an increase of 0.1% compared to the index of October 2024 (109.19).

The percentage change of the CPI over the last twelve (12) months (November 2023 to November 2024) is 0.8, a decrease of 0.9 percentage points (ppts) compared to the percentage change for the same period of last year (1.7%).

The period average (last 24 months) percentage change of the CPI for the periods November 2022 to November 2023 and November 2023 to November 2024 is 1.9%, a decrease of 1.8 ppts compared to the period average percentage change over the periods November 2021 to November 2022 and November 2022 to November 2023 (3.7%).

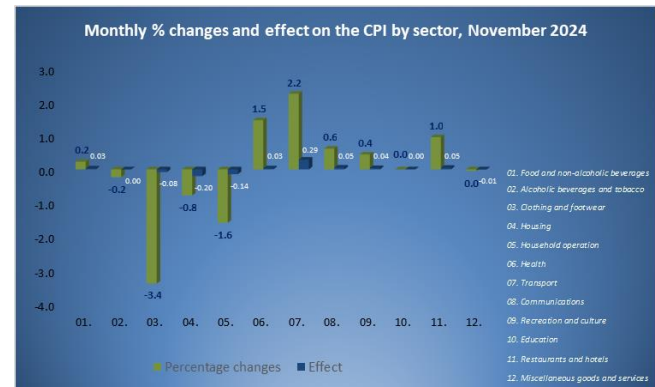


During this month, six (6) of the twelve (12) sectors registered increases in prices. The increase that had the greatest influence on the CPI was registered for the "Transport" (2.2%) sector, which contributed with an effect of 0.29 ppts. The increases in the remaining sectors had an effect of 0.20 ppts on the CPI of November 2024.

Aforementioned increases were partially offset mainly by decreases in the indices for the "Housing" (-0.8%) and "Household operation" (-1.6%) sectors, which caused an effect of respectively -0.20 and -0.14 ppts. The decreases in the remaining sectors had an effect of -0.09 ppts on the CPI of November 2024.

The increase in the "Transport" sector was mainly due to an increase of 2.5% in the category "Operation of personal transport equipment", which contributed to an effect of 0.20 ppts.

The decrease in the "Housing" sector was due to a decrease in the category "Electricity, gas and other fuels" (-3.8%), which contributed to an effect of -0.30 ppts. The decrease in the "Household operation" sector was mainly due to a decrease of 6.2% in the category "Household appliances", which contributed to an effect of -0.14 ppts.



Consumption basket

The consumption basket of the CPI consists of 408 goods and services. Compared to October 2024, 43.4% of these products had an increase in price, causing an effect of 1.00 ppt, while 41.2% showed a decrease, contributing to an effect of -0.94 ppts and the remaining 15.4% had no change in price. The prices of goods decreased by 0.4% and caused an influence of -0.23 ppts, while the prices of services increased by 0.7% compared to October 2024 and had an influence of 0.28 ppts on the CPI of November 2024.

CPI (BASE JUN 2019 = 100)			November-2024						CPIC			SUBSISTENCE LEVEL		
Month	Year	Index	Monthly	Year-to-date	End of period	Period average	Goods	Services	CPIC	Energy	Food	1 adult	2 adults + 2 children	
November	2024	109.25	↑ 0.1	↑ 0.4	↑ 0.8	↑ 1.9	↑ -0.4	↓ 0.7	↑ 3.0	↑ -2.9	↓ 2.2	↑ 2,625	↓ 5,512	
October	2024	109.19	↓ -0.4	↓ 0.4	↑ 1.0	↑ 2.0	↑ -0.6	↓ 0.0	↑ 3.2	↑ -3.1	↓ 2.1	↑ 2,629	↓ 5,520	
November	2023	108.34	0.2	1.8	1.7	3.7	-0.2	0.7	2.7	5.6	7.4	2,594	5,447	

Core inflation

The CPIC (core inflation) - CPI excluding the effect of energy and food – was 3.0% in November 2024. The energy index - which consists of the products: electricity, water, gasoline and diesel – was -2.9%. The food index showed an increase of 2.2%.

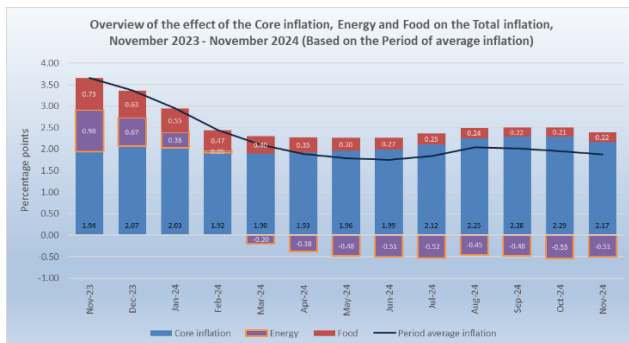
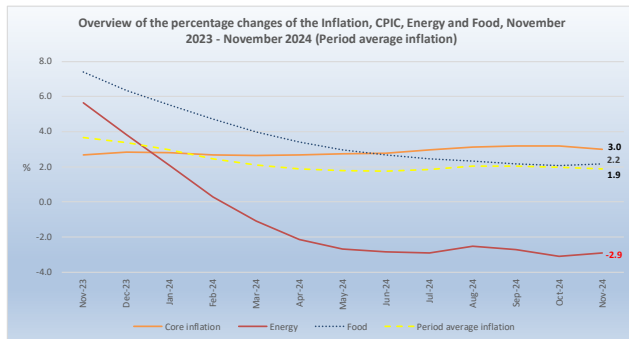
What is CPIC?

The CPIC (core inflation) is a portion of the inflation where certain items, which have volatile price movements are excluded, such as food products and energy. When calculating the core inflation, the most volatile components are eliminated from the inflation. The core inflation index is used to assess the medium and long-term trends of the general level of prices. For purposes of economic policy-making, especially monetary policy, many economists focus on the proportion of the core inflation, as this allows a more in-depth evaluation of the recent inflation developments in the economy. The annual average of the CPI is used to calculate the CPIC.

The CPIC is calculated by comparing the average index for the most recent 12-month period compared with the preceding 12-month period.

The three main uses of a CPI are:

1. a calculation method to compensate employees due to the loss of purchasing power, adjusting their salaries, with the percentage change rate of the CPI, which is known as indexation.
2. a tool used in National Accounts to adjust components of the gross domestic product (GDP) from nominal terms to real terms. (For example, by eliminating the effect of the price changes from the consumption value)
3. a means commonly used by governments and central banks to set inflation targets.



Subsistence level

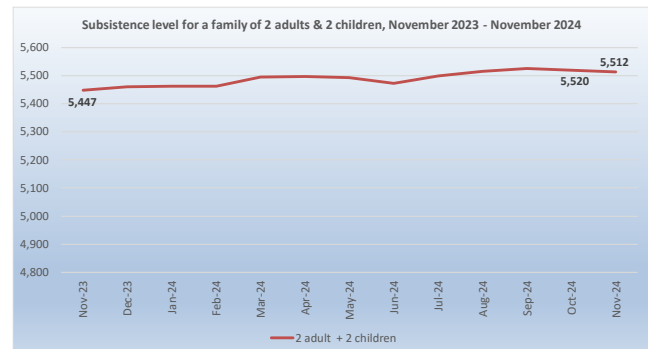
The subsistence level for a household consisting of two (2) adults and two (2) children (aged 0-15 years) in November 2024 is Afl. 5,512, a decrease of Afl. 8 compared to October 2024 (Afl. 5,520). The subsistence level for a single adult household is Afl. 2,625, a decrease of Afl. 4 compared to October 2024 (Afl. 2,629).

What is the Subsistence level and how is it adjusted?

The CBS defines the subsistence level as the minimum level of income that is perceived as necessary for a person or family to be able to function in the society in an adequate and socially acceptable manner. When the definition of subsistence level is used, it refers in reality to a "Social subsistence level" and not the literal definition "the money needed to purchase those goods and services deemed necessary for living a life free of basic deprivation" (United Nations).

A subsistence level index was created by calculating the cost of the essential resources that an average adult consumes during a month. Each month this index is adjusted, based on the prices of food, clothing, shelter, transportation, and other items in the basket.

The current subsistence level is based on the "Subsistence level 2010" report published by the CBS in December 2010, and is updated monthly according to the CPI. The reference unit used in this report is of a household consisting of two adults and two children (0 to 14 years). The total weight of such household is 2.1 (1.0 + 0.5 + 0.3 + 0.3).



The subsistence level in November 2024

The subsistence level is the minimum level of income which is perceived necessary to achieve an adequate standard of living in a given country. The subsistence level is usually determined by estimating the cost of all the essential resources that an average adult consumes in one month or year. This is commonly called a basic needs index, and varies according to the price of food, clothing, housing, transport and other items in the "basket". Equivalent scales are used to adjust the assumed standard of living, of households of different sizes and composition. The scale assigns a weight of 1.0 for the first adult and 0.5 for each additional adult in the household (aged 15+) and a weight of 0.3 for each child (aged 0-14 years). The subsistence level is based on figures of the report "Bestaansminimum 2010" and is monthly updated for inflation using the monthly CPI. The reference unit used in this report is a household consisting of two (2) adults and two (2) children (aged 0-14 years).

In November 2024 the monthly subsistence level for a household consisting of two (2) adults and two (2) children (aged 0-14 years) (Afl. 5,512) showed an increase of Afl. 65 compared to November 2023 (Afl. 5,447) and was mainly caused by an increase of Afl. 62 in the sector "Food and non-alcoholic beverages". The largest decrease in November 2024 was registered in the sector "Housing" (Afl. - 12).

Table 1 Monthly subsistence level in Aruba (in Afl.) by sector for a family of 2 adults and 2 children (aged 0-14 years)

Sector	Absolute		
	Nov-23	Nov-24	Change
Food and non-alcoholic beverages	2,258	2,320	62
Clothing and footwear	247	245	-2
Housing	1,650	1,638	-12
Household operation	115	115	0
Health	84	85	1
Transport	322	331	9
Communications	169	171	2
Recreation and culture	160	156	-4
Education	97	97	0
Miscellaneous goods and services	344	353	9
Total	5,447	5,512	65

Source: Central Bureau of Statistics Aruba

Table 2 Monthly Subsistence level in Aruba (in Afl.) by family size and composition, November 2024 (Base period Oct. 2010)

Period	Escala di ekivalencia				
	1	1.3	1.5	1.8	2.1
	1 adult	1 adult + 1 child	2 adults	2 adults + 1 child	2 adults + 2 children
Nov-23	2,594	3,372	3,891	4,669	5,447
Dec-23	2,600	3,380	3,900	4,680	5,460
Jan-24	2,601	3,381	3,901	4,681	5,462
Feb-24	2,601	3,381	3,901	4,682	5,462
Mar-24	2,616	3,401	3,924	4,709	5,494
Apr-24	2,618	3,403	3,927	4,712	5,497
May-24	2,615	3,400	3,923	4,708	5,492
Jun-24	2,606	3,388	3,909	4,691	5,473
Jul-24	2,619	3,404	3,928	4,714	5,499
Aug-24	2,626	3,413	3,938	4,726	5,514
Sep-24	2,631	3,421	3,947	4,736	5,526
Oct-24	2,629	3,417	3,943	4,732	5,520
Nov-24	2,625	3,412	3,937	4,725	5,512

Source: Central Bureau of Statistics Aruba

In November 2024, the monthly subsistence level for a single adult household is Afl 2,625, which represents an income deficit of Afl. 639, a decrease of Afl. 62 compared to the deficit observed one year ago (Afl. 701). This deficit is the third highest registered over a period of six (6) years for the month November.

Table 3 Monthly income surplus/deficit (in Afl.) for a single adult household for November, 2019 - 2024

Period	Minimum		Surplus/deficit
	1 adult	wage	
2019	2,329	1,762	-567
2020	2,266	1,815	-451
2021	2,331	1,815	-516
2022	2,553	1,815	-738
2023	2,594	1,893	-701
2024	2,625	1,986	-639

Source: Central Bureau of Statistics Aruba

Table 4 Overview of the percentage changes of the CPI and the subsistence level, November 2023 - November 2024 (Jun 2019=100)

	Nov-23	Dec-23	Jan-24	Feb-24	Mar-24	Apr-24	May-24	Jun-24	Jul-24	Aug-24	Sep-24	Oct-24	Nov-24
Index CPI													
<i>CPI (Monthly)</i>	108.34	108.79	108.31	108.57	109.37	109.45	109.41	108.72	109.20	110.01	109.58	109.19	109.25
<i>CPI (12-month average)</i>	107.14	107.34	107.47	107.56	107.72	107.91	108.14	108.35	108.60	108.86	108.99	109.08	109.15
Percentage changes													
<i>Monthly</i>	0.2	0.4	-0.4	0.2	0.7	0.1	-0.03	-0.6	0.4	0.75	-0.4	-0.4	0.1
<i>Year-to-date</i>	1.8	2.3	-0.4	-0.2	0.5	0.6	0.6	-0.1	0.4	1.1	0.7	0.4	0.4
<i>End of period</i>	1.7	2.3	1.5	0.9	1.8	2.2	2.6	2.4	2.8	2.9	1.5	1.0	0.8
<i>Period average</i>	3.7	3.4	2.9	2.4	2.1	1.9	1.8	1.7	1.8	2.0	2.0	2.0	1.9
Index Goods													
<i>Goods (Monthly)</i>	108.29	108.24	107.77	108.18	108.91	109.58	109.68	108.49	108.77	110.52	109.93	109.26	108.83
<i>Goods (12-month average)</i>	108.67	108.63	108.50	108.32	108.24	108.22	108.29	108.31	108.51	108.78	108.91	108.97	109.01
Percentage changes													
<i>Monthly</i>	-0.2	0.0	-0.4	0.4	0.7	0.6	0.1	-1.1	0.3	1.6	-0.5	-0.6	-0.4
<i>Year-to-date</i>	-0.5	-0.5	-0.4	-0.1	0.6	1.2	1.3	0.2	0.5	2.1	1.6	0.9	0.5
<i>End of period</i>	-1.3	-0.5	-1.4	-1.9	-0.9	-0.2	0.8	0.2	2.3	3.0	1.4	0.7	0.5
<i>Period average</i>	4.6	3.8	2.8	1.7	0.9	0.3	-0.2	-0.5	-0.4	0.0	0.1	0.2	0.3
Index Services													
<i>Services (Monthly)</i>	108.41	109.55	109.07	109.12	110.01	109.26	109.05	109.05	109.79	109.31	109.09	109.09	109.83
<i>Services (12-month average)</i>	105.00	105.55	106.05	106.49	106.99	107.48	107.94	108.42	108.74	108.97	109.11	109.23	109.35
Percentage changes													
<i>Monthly</i>	0.7	1.0	-0.4	0.0	0.8	-0.7	-0.2	0.0	0.7	-0.4	-0.2	0.0	0.7
<i>Year-to-date</i>	5.3	6.4	-0.4	-0.4	0.4	-0.3	-0.5	-0.5	0.2	-0.2	-0.4	-0.4	0.3
<i>End of period</i>	6.3	6.4	5.8	5.1	5.8	5.7	5.3	5.6	3.6	2.6	1.6	1.3	1.3
<i>Period average</i>	2.4	2.8	3.2	3.5	3.8	4.3	4.6	5.0	5.1	5.0	4.8	4.6	4.1
Indices CPI, Energy & Food													
<i>CPI (12-month average)</i>	104.36	104.73	104.98	105.18	105.44	105.74	106.02	106.27	106.58	106.93	107.16	107.36	107.50
<i>Energy (12-month average)</i>	115.44	114.96	114.51	113.99	113.66	113.40	113.43	113.45	113.41	113.29	112.91	112.41	112.10
<i>Food (12-month average)</i>	114.34	114.42	114.68	114.85	115.04	115.25	115.46	115.68	115.93	116.16	116.37	116.57	116.82
Percentage changes													
<i>CPI (Period average)</i>	2.7	2.9	2.8	2.7	2.6	2.7	2.7	2.8	2.9	3.1	3.2	3.2	3.0
<i>Energy (Period average)</i>	5.6	3.8	2.1	0.3	-1.1	-2.1	-2.7	-2.8	-2.9	-2.5	-2.7	-3.1	-2.9
<i>Food (Period average)</i>	7.4	6.3	5.5	4.7	4.0	3.4	3.0	2.7	2.4	2.3	2.2	2.1	2.2
Subsistence level (Monthly)													
<i>1 adult</i>	2,594	2,600	2,601	2,601	2,616	2,618	2,615	2,606	2,619	2,626	2,631	2,629	2,625
<i>2 adults + 2 children</i>	5,447	5,460	5,462	5,462	5,494	5,497	5,492	5,473	5,499	5,514	5,526	5,520	5,512
Changes in Afl													
<i>1 adult (Monthly)</i>	7	6	1	0	15	2	-3	-9	13	7	5	-2	-4
<i>1 adult (Yearly)</i>	41	40	47	33	51	54	65	65	79	72	46	42	31
<i>2 adults + 2 children (Monthly)</i>	15	13	2	0	32	3	-5	-19	26	15	12	-6	-8
<i>2 adults + 2 children (Yearly)</i>	85	84	99	69	108	113	138	137	165	150	98	88	65

Source: Central Bureau of Statistics Aruba

Table 5 Percentage change by sector

Sector	Weight	Effect	Percentage changes			
			Monthly	Year-to-date	End of period	Period average
	Coefficient	Oct - Nov	Oct - Nov	Dec - Nov	Nov 23 - Nov 24	Nov 22/23 - Nov 23/24
CPI	10,000.0	0.05	0.1	0.4	0.8	1.9
01. Food and non-alcoholic beverages	1,125.3	0.03	0.2	2.4	2.7	2.5
02. Alcoholic beverages and tobacco	81.9	0.00	-0.2	0.3	-0.1	0.9
03. Clothing and footwear	625.9	-0.08	-3.4	-2.5	-0.9	0.1
04. Housing	2,553.3	-0.20	-0.8	-0.4	-0.7	1.4
05. Household operation	741.3	-0.14	-1.6	-0.7	-0.1	-0.1
06. Health	235.8	0.03	1.5	0.4	1.9	2.5
07. Transport	1,815.4	0.29	2.2	4.4	2.9	-3.7
08. Communications	706.3	0.05	0.6	0.6	1.2	13.7
09. Recreation and culture	891.2	0.04	0.4	-6.8	-2.8	-0.8
10. Education	83.0	0.00	0.0	0.0	0.0	15.8
11. Restaurants and hotels	373.7	0.05	1.0	2.8	3.2	4.3
12. Miscellaneous goods and services	767.0	-0.01	0.0	2.0	2.6	2.8

Source: Central Bureau of Statistics Aruba

Table 6 Categories with the greatest positive effect on the CPI of November 2024

Category	Monthly change	Effect
Operation of personal transport equipment	2.5	0.20
Holidays	6.1	0.13
Maintenance and repair of the dwelling	1.7	0.10
Purchase of vehicles	2.1	0.09

Source: Central Bureau of Statistics Aruba

Table 7 Categories with the greatest negative effect on the CPI of November 2024

Category	Monthly change	Effect
Electricity, gas and other fuels	-3.8	-0.30
Household appliances	-6.2	-0.14
Clothing	-5.4	-0.10
Other recreational items and equipment; gardens and pets	-1.7	-0.04
Audio-visual, photographic and information processing equipment	-11.0	-0.04

Source: Central Bureau of Statistics Aruba

Change in prices of crude oil, utilities, gasoline and diesel in November 2024

The prices of utilities (electricity and water), gasoline and diesel are for the greater part determined by international crude oil prices. In November 2024 the average price per barrel of crude oil (US\$ 69.60) had a decrease of US\$ 2.88 (-4.0%) compared to October 2024 (US\$ 72.48).

The total energy charge per kWh for the usage of electricity up to 500 kWh decreased by Afl. 1.49 cents per kWh from Afl. 35.80 cents per kWh in October 2024 to Afl. 34.31 cents per kWh in November 2024. The total energy charge per kWh for the usage of electricity between 501 - 1000 kWh decreased by Afl. 1.53 cents per kWh from Afl. 36.84 cents per kWh in October 2024 to Afl. 35.31 cents per kWh in November 2024. The flat rate remained at Afl. 12.50. Subsequently, the average electricity price per household decreased from Afl. 274.57 to Afl. 263.67 (-4.0%) causing an effect of -0.30 ppts on the CPI, while the average price of water per household remained at Afl. 168.73. Additionally, the total energy charge per kWh for the usage of electricity above 1000 kWh decreased by Afl. 2.02 cents per kWh from Afl. 48.47 cents per kWh in October 2024 to Afl. 46.45 cents per kWh in November 2024.

In November 2024 the price of gasoline registered an increase of Afl. 3.50 cents (1.5%) and had an effect of 0.07 ppts on the CPI. The price of diesel registered an increase of Afl. 4.80 cents (2.4%) and had an effect of 0.01 ppt on the CPI of November 2024.

In November 2024, utilities, gasoline and diesel as a group, showed a decrease in price of 1.4% compared to October 2024, and had an influence of -0.23 ppts on the CPI, while the remaining 404 goods and services, as a group, show an decrease of 0.3% and had an effect of 0.29 ppts on the CPI.

Table 9 Effect on the CPI of November 2024 of goods and services which are dependent on crude oil prices

Category	Weight	Monthly		Yearly	
		Change	Effect	Change	Effect
Electricity	810.2	-4.0	-0.30	-4.0	-0.31
Gasoline	430.5	1.5	0.07	-4.1	-0.19
Water	367.3	0.0	0.00	0.0	0.00
Diesel	30.2	2.4	0.01	-16.8	-0.06
Total group	1,638.1	-1.4	-0.23	-3.3	-0.56
Remaining goods and services	8,361.9	0.3	0.29	1.7	1.40
CPI	10,000.0	0.1	0.05	0.8	0.84

Source: Central Bureau of Statistics Aruba

Table 8 Prices of crude oil, utilities, gasoline and diesel, 2023 - 2024

Month	2023							2024						
	Crude oil	Total energy charge		Electricity	Water	Gasoline	Diesel	Crude oil	Total energy charge		Electricity	Water	Gasoline	Diesel
		≤ 500 kWh	501-1000 kWh						≤ 500 kWh	501-1000 kWh				
January	78.01	38.53	39.65	294.56	168.73	243.80	246.60	73.56	35.80	36.84	274.57	168.73	232.90	213.60
April	76.99	38.53	39.65	294.56	168.73	262.50	260.30	76.93	35.80	36.84	274.57	168.73	245.40	227.80
March	73.51	38.53	39.65	294.56	168.73	257.60	234.80	81.01	35.80	36.84	274.57	168.73	255.60	236.40
April	79.51	38.53	39.65	294.56	168.73	262.40	231.50	85.50	35.80	36.84	274.57	168.73	266.90	230.10
May	71.86	35.80	36.84	274.57	168.73	266.70	221.50	80.31	35.80	36.84	274.57	168.73	269.00	228.20
June	70.12	35.80	36.84	274.57	168.73	255.90	209.10	79.89	35.80	36.84	274.57	168.73	257.60	217.70
July	75.57	35.80	36.84	274.57	168.73	256.40	212.50	82.57	35.80	36.84	274.57	168.73	251.60	218.50
August	81.34	35.80	36.84	274.57	168.73	268.80	225.60	76.79	35.80	36.84	274.57	168.73	257.60	220.70
September	88.11	35.80	36.84	274.57	168.73	283.70	251.70	70.30	35.80	36.84	274.57	168.73	251.20	210.20
October	85.94	35.80	36.84	274.57	168.73	277.90	260.80	72.48	35.80	36.84	274.57	168.73	234.90	201.40
November	78.48	35.80	36.84	274.57	168.73	248.60	247.80	69.60	34.31	35.31	263.67	168.73	238.40	206.20
December	72.61	35.80	36.84	274.57	168.73	237.70	227.20							
Yearly Average	77.67	36.71	37.78	281.24	168.73	260.17	235.78	77.18	35.66	36.70	273.58	168.73	251.01	219.16

Source: Central Bureau of Statistics Aruba

¹ Average West Texas Intermediate (WTI) crude oil price per barrel in US\$ (Source: U.S. Energy Information Administration)

² Total energy charge in Afl. cents per kWh

³ Electricity price in Afl. is based on an average household usage of 725.5 kWh

⁴ Water price in Afl. is based on an average household usage in m³

⁵ Gasoline and diesel prices in Afl. cents per liter

Change in prices of Food & catering services in November 2024

The “Food & catering services” index showed an increase of 0.3% in November 2024, after having increased 0.1% in October 2024. The index for “Food at home” showed an increase of 0.2% in November, as seven (7) of the eleven (11) “Food at home” indices increased in November 2024. The “Vegetables” index registered the largest increase (2.1%) in November 2024. Furthermore, other significant increases were posted in the indices for “Oils and fats” (1.3%), “Fish and other seafood” (1.2%) and “Milk, cheese and eggs” (0.8%).

The largest decreases in November 2024 were registered for the indices of “Potatoes and other tubers” (-2.6%) and “Fruit” (-2.2%).

The index for “Food away from home” shows an increase of 0.4% in November 2024.

In November 2024, “Food at home” and “Food away from home” as a group showed an increase in price of 0.3% compared to October 2024, and had an effect of 0.05 pts on the CPI, while the remaining goods and services, as a group, experienced a slight increase in price of 0.01%, causing an effect of 0.01 ppt on the CPI.

Table 11 Effect on the CPI of November 2024 of Food at home and Food away from home

Category	Weight	Monthly change	Effect
Food at home	1,087.7	0.2	0.03
Food away from home	429.8	0.4	0.02
Total group	1,517.5	0.3	0.05
Remaining goods and services	8,482.5	0.01	0.01
CPI	10,000.0	0.1	0.05

Source: Central Bureau of Statistics Aruba

Table 10 Percentage change for Food & catering services

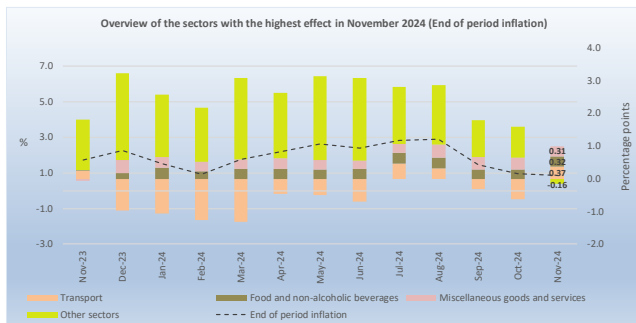
	Weight coefficient	Indices			Percentage changes			Effect	
		Nov-23	Oct-24	Nov-24	Monthly Sep - Oct	Monthly Oct - Nov	End of period Nov 23 - Nov 24	Monthly Oct - Nov	End of period Nov 23 - Nov 24
Food & catering services	1,517.5	117.08	119.89	120.23	0.1	0.3	2.7	0.048	0.441
Food at home	1,087.7	115.65	118.53	118.80	0.1	0.2	2.7	0.027	0.317
Bread and cereals	178.1	120.06	121.64	122.09	-0.4	0.4	1.7	0.007	0.033
Meat	242.5	116.32	118.90	119.46	-0.2	0.5	2.7	0.012	0.070
Fish and other seafood	49.0	111.80	110.29	111.66	1.1	1.2	-0.1	0.006	-0.001
Milk, cheese and eggs	135.3	122.93	128.67	129.75	-0.4	0.8	5.6	0.013	0.085
Oils and fats	32.2	124.22	123.54	125.18	0.5	1.3	0.8	0.005	0.003
Fruit	97.6	103.48	108.64	106.21	1.2	-2.2	2.6	-0.022	0.025
Potatoes and other tubers	18.2	89.74	91.54	89.15	0.4	-2.6	-0.7	-0.004	-0.001
Vegetables	89.1	94.54	95.72	97.77	2.0	2.1	3.4	0.017	0.027
Sugar, jam, honey and other confectionery	42.0	127.39	129.16	128.63	0.1	-0.4	1.0	-0.002	0.005
Food products n.e.c.	80.1	121.17	124.60	124.68	-0.1	0.1	2.9	0.001	0.026
Non-alcoholic beverages	123.6	120.35	124.88	124.28	0.2	-0.5	3.3	-0.007	0.004
Food away from home	429.8	120.72	123.34	123.86	0.1	0.4	2.6	0.021	0.125
Other goods and services	8,482.5	106.77	107.27	107.28	-0.5	0.01	0.5	0.007	0.398
Other goods	4,735.8	106.60	107.13	106.54	-0.8	-0.6	-0.1	-0.256	-0.025
Other services	3,746.7	107.00	107.45	108.22	0.0	0.7	1.1	0.263	0.423
CPI	10,000.0	108.34	109.19	109.25	-0.4	0.1	0.8	0.055	0.839

Source: Central Bureau of Statistics Aruba

CPI for the period November 2023 – November 2024

Consumer Price Index

Over the last 12 months, the CPI increased by 0.8%. Six (6) of the twelve (12) sectors registered increases in prices. The increases that had the greatest influence on the CPI were registered for the “Transport” (2.9%), “Food and non-alcoholic beverages” (2.7%), “Miscellaneous goods and services” (2.6%), “Restaurants and hotels” (3.2%) and “Communications” (1.2%) sectors, which contributed with an effect of respectively, 0.37, 0.32, 0.31, 0.15, and 0.11 ppts. The increases in the remaining sectors had an effect of 0.04 ppts on the CPI of November 2023 - November 2024.



Aforementioned increases were partially offset, mainly by decreases in the indices for the “Recreation and culture” (-2.8%) and “Housing” (-0.7%) sectors, causing an effect of respectively -0.25 and -0.18 ppts. The decreases in the remaining sectors had an effect of -0.03 ppts on the CPI of November 2023 - November 2024.

The increase in the “Transport” sector was mainly due to an increase in the category “Purchase of vehicles” (10.7%), which contributed to an effect of 0.44 ppts. The increase in the “Food and non-alcoholic beverages” sector was mainly due to an increase in the category “Food” (2.7%), which contributed with an effect of 0.27 ppts. The increase in the “Miscellaneous goods and services” sector was mainly due to an increase in the category “Personal effects n.e.c.” (24.8%), which contributed with an effect of 0.26 ppts. The increase in the “Restaurants and hotels” sector was mainly due to an increase in the category “Catering services” (2.6%), which contributed to an effect of 0.12 ppts. The increase in the “Communications” sector was due to an increase in the category “Telephone and telefax equipment” (40.0%), which contributed with an effect of 0.11 ppts.

The decrease in the “Recreation and culture” sector was mainly due to a decrease in the category “Holidays” (-5.7%), which contributed to an effect of -0.14 ppts. The decrease in the “Housing” sector was due to a decrease in the category “Electricity, gas and other fuels” (-3.8%), which contributed to an effect of -0.31 ppts.

Consumption basket

Over the last year 48.5% of the products in the consumption basket had an increase in price, causing an effect of 2.57 ppts, while 39.7% showed a decrease, contributing to an effect of -1.73 ppts and the remaining 11.8% had no change in price. The prices of goods increased by 0.5% and caused an influence of 0.29 ppts. The prices of services showed an increase of 1.3% and had an influence of 0.55 ppts.

Subsistence level

Over the last 12 months, the subsistence level for a household consisting of two (2) adults and two (2) children (aged 0-15 years) registered an increase of Afl. 65, from Afl. 5,447 in November 2023 to Afl. 5,512 in November 2024. This increase was mainly due to an increase in the “Food and non-alcoholic beverages” (Afl. 62) sector.

Change in prices of crude oil, utilities, gasoline and diesel

The average price per barrel of crude oil registered a decrease of US\$ 8.88 (-11.3%) from US\$ 78.48 in November 2023 to US\$ 69.60 in November 2024.

The energy index decreased by 3.3% over the past 12 months and had an influence of -0.56 ppts. The indices of “Gasoline” (-4.1%) and “Diesel” (-16.8%) registered decreases over the last year, contributing with an effect of respectively, -0.19 and -0.06 ppts on the yearly CPI. During this period the index of “Electricity” registered a decrease of 4.0% and contributed with an effect -0.31 ppts, while the index of “Water” did not register any changes. The remaining 404 goods and services, as a group, show an increase of 1.7% and had an effect of 1.40 ppts on the CPI.

Change in prices of Food & catering services

Over the last 12 months, the “Food & catering services” increased by 2.7%. The “Food at home” index showed an increase of 2.7%, where nine (9) of the “Food at home” food groups increased over the period.

The “Milk, cheese and eggs” index increased by 5.6%, the largest increase among the “Food at home” food groups. Furthermore, other significant increases were posted in the indices for “Vegetables” (3.4%), “Non-alcoholic beverages” (3.3%), “Food products n.e.c.” (2.9%), “Meat” (2.7%) and “Fruit” (2.6%). The largest decrease during this period was registered in the index for “Potatoes and other tubers” (-0.7%).

The index for “Food away from home” increased by 2.6% over the last 12 months.

APPENDIX 1

Monthly & Yearly Changes (%) in the Consumer Price Index for November 2024, Total Population (Jun 2019 = 100)

DESCRIPTION	WEIGHT coefficient	2023 Nov	2023 Dec	2024 Oct	2024 Nov	Monthly Oct - Nov	Ytd Oct - Nov	End of period Dec - Nov 12 months	Period average Nov 23 - Nov 24 24 months
Food and non-alcoholic beverages	1,087.7	115.65	115.99	118.53	118.80	0.2	2.4	2.7	2.5
Food	964.1	115.04	115.38	117.72	118.10	0.3	2.4	2.7	2.2
Non-alcoholic beverages	123.6	120.35	120.73	124.88	124.28	-0.5	2.9	3.3	4.8
Alcoholic beverages and tobacco	78.2	110.54	110.09	110.64	110.38	-0.2	0.3	-0.1	0.9
Alcoholic beverages for consumption at home	62.2	108.87	108.28	108.56	108.24	-0.3	0.0	-0.6	0.5
Tobacco	16.0	117.02	117.14	118.69	118.68	0.0	1.3	1.4	2.2
Clothing and footwear	276.8	90.66	92.15	92.97	89.82	-3.4	-2.5	-0.9	0.1
Clothing	212.8	92.63	93.25	96.84	91.65	-5.4	-1.7	-1.1	1.0
Footwear	64.0	84.10	88.50	80.09	83.74	4.6	-5.4	-0.4	-3.0
Housing	2,522.2	111.72	111.36	111.80	110.94	-0.8	-0.4	-0.7	1.4
Actual rentals for housing	666.7	106.79	106.92	108.26	108.39	0.1	1.4	1.5	1.5
Imputed rentals for housing	34.4	94.59	94.59	94.59	94.59	0.0	0.0	0.0	0.0
Maintenance and repair of the dwelling	517.0	122.22	120.29	120.73	122.78	1.7	2.1	0.5	9.4
Water supply and miscellaneous services relating to the dwelling	463.6	121.83	121.83	121.83	121.83	0.0	0.0	0.0	0.3
Electricity, gas and other fuels	840.4	104.30	104.30	104.30	100.34	-3.8	-3.8	-3.8	-3.1
Household operation	929.2	103.53	104.24	105.14	103.48	-1.6	-0.7	-0.1	-0.1
Furniture, furnishings, carpets and other floor coverings	128.8	83.05	75.66	89.24	89.72	0.5	18.6	8.0	-8.1
Household textiles	58.6	74.42	68.51	63.64	58.30	-8.4	-14.9	-21.7	-11.0
Household appliances	246.0	102.82	112.65	103.05	96.69	-6.2	-14.2	-6.0	-4.2
Glassware, tableware and household utensils	17.2	60.10	60.96	53.72	65.43	21.8	7.3	8.9	-11.0
Tools and equipment for house and garden	58.2	149.43	140.37	143.44	144.97	1.1	3.3	-3.0	-5.0
Goods and services for routine household maintenance and cleaning	420.5	109.71	109.83	113.83	113.78	0.0	3.6	3.7	4.4
Health	223.1	101.81	103.40	102.29	103.78	1.5	0.4	1.9	2.5
Medical products, appliances and equipment	152.3	98.65	101.98	99.86	100.96	1.1	-1.0	2.3	2.9
Out-patient services	52.4	108.02	107.85	109.44	109.33	-0.1	1.4	1.2	2.1
Other treatments	7.8	100.71	100.67	101.31	101.50	0.2	0.8	0.8	0.9
Health products and services n.e.c.	10.5	117.36	103.87	102.44	118.58	15.8	14.2	1.0	0.6
Transport	1,257.4	110.48	108.86	111.16	113.66	2.2	4.4	2.9	-3.7
Purchase of vehicles	442.6	100.24	100.39	108.74	110.99	2.1	10.6	10.7	-7.1
Operation of personal transport equipment	763.3	118.37	115.03	114.36	117.16	2.5	1.9	-1.0	-1.9
Transport services	51.5	81.66	90.26	84.66	84.60	-0.1	-6.3	3.6	-2.8
Communications	849.6	110.87	111.53	111.56	112.24	0.6	0.6	1.2	13.7
Telephone and telefax equipment	43.8	66.28	78.96	79.53	92.81	16.7	17.5	40.0	9.1
Telephone and telefax services	805.8	113.30	113.30	113.30	113.30	0.0	0.0	0.0	13.9
Recreation and culture	1,013.3	95.92	100.02	92.85	93.26	0.4	-6.8	-2.8	-0.8
Audio-visual, photographic and information processing equipment	58.5	72.44	71.18	75.05	66.82	-11.0	-6.1	-7.8	-5.1
Other major durables for recreation and culture	20.0	84.82	94.16	103.67	102.70	-0.9	9.1	21.1	5.2
Other recreational items and equipment; gardens and pets	266.6	110.06	111.42	109.68	107.85	-1.7	-3.2	-2.0	2.0
Recreational and cultural services	309.1	101.72	102.10	102.27	102.28	0.0	0.2	0.5	0.0
Newspapers, books and stationery	43.7	92.78	90.64	74.99	74.54	-0.6	-17.8	-19.7	-8.0
Holidays	315.4	83.78	95.35	74.49	79.00	6.1	-17.2	-5.7	-3.5
Education	98.0	131.23	131.23	131.23	131.23	0.0	0.0	0.0	15.8
Pre primary and primary education	24.0	142.86	142.86	142.86	142.86	0.0	0.0	0.0	25.0
Secondary education	43.4	145.73	145.73	145.73	145.73	0.0	0.0	0.0	20.3
Post-secondary non-tertiary education	4.6	100.00	100.00	100.00	100.00	0.0	0.0	0.0	0.0
Tertiary education	23.6	100.00	100.00	100.00	100.00	0.0	0.0	0.0	0.0
Education not definable by level	2.5	120.00	120.00	120.00	120.00	0.0	0.0	0.0	0.9
Restaurants and hotels	442.0	118.76	119.15	121.34	122.50	1.0	2.8	3.2	4.3
Catering services	429.8	120.72	120.95	123.34	123.86	0.4	2.4	2.6	4.0
Accommodation services	12.2	49.59	55.62	50.85	74.38	46.3	33.7	50.0	23.7
Miscellaneous goods and services	1,222.6	104.29	104.93	107.10	107.05	0.0	2.0	2.6	2.8
Personal care	427.1	104.41	105.17	106.05	105.84	-0.2	0.6	1.4	3.5
Personal effects n.e.c.	106.6	104.45	108.68	130.09	130.38	0.2	20.0	24.8	17.5
Social protection	78.2	133.33	133.33	133.33	133.33	0.0	0.0	0.0	0.4
Insurance	610.7	100.46	100.46	100.46	100.46	0.0	0.0	0.0	0.1
CPI	10,000.0	108.34	108.79	109.19	109.25	0.1	0.4	0.8	1.9

Source: Central Bureau of Statistics Aruba

The Period average (last 24 months) change is calculated by comparing the average index for the most recent 12-month period compared with the average index of the preceding 12-month period.

APPENDIX 2

Effect on the Consumer Price Index per sector and category for November 2024, Total Population (Jun 2019 = 100)

DESCRIPTION	WEIGHT coefficient	Monthly	Ytd	End of period	Period average
		Oct - Nov	Dec - Nov	Nov 23 - Nov 24 12 months	Nov 22/23 - Nov 23/24 24 months
Food and non-alcoholic beverages	1,087.7	0.03	0.28	0.32	0.29
Food	964.1	0.03	0.24	0.27	0.22
Non-alcoholic beverages	123.6	-0.01	0.04	0.04	0.06
Alcoholic beverages and tobacco	78.2	0.00	0.00	0.00	0.01
Alcoholic beverages for consumption at home	62.2	0.00	0.00	0.00	0.00
Tobacco	16.0	0.00	0.00	0.00	0.00
Clothing and footwear	276.8	-0.08	-0.06	-0.02	0.00
Clothing	212.8	-0.10	-0.03	-0.02	0.02
Footwear	64.0	0.02	-0.03	0.00	-0.02
Housing	2,522.2	-0.20	-0.10	-0.18	0.36
Actual rentals for housing	666.7	0.01	0.09	0.10	0.10
Imputed rentals for housing	34.4	0.00	0.00	0.00	0.00
Maintenance and repair of the dwelling	517.0	0.10	0.12	0.03	0.50
Water supply and miscellaneous services relating to the dwelling	463.6	0.00	0.00	0.00	0.02
Electricity, gas and other fuels	840.4	-0.30	-0.31	-0.31	-0.26
Household operation	929.2	-0.14	-0.07	0.00	-0.01
Furniture, furnishings, carpets and other floor coverings	128.8	0.01	0.17	0.08	0.00
Household textiles	58.6	-0.03	-0.05	-0.09	-0.04
Household appliances	246.0	-0.14	-0.36	-0.14	-0.10
Glassware, tableware and household utensils	17.2	0.02	0.01	0.01	-0.01
Tools and equipment for house and garden	58.2	0.01	0.02	-0.02	-0.04
Goods and services for routine household maintenance and cleaning	420.5	0.00	0.15	0.16	0.19
Health	223.1	0.03	0.01	0.04	0.05
Medical products, appliances and equipment	152.3	0.02	-0.01	0.03	0.04
Out-patient services	52.4	0.00	0.01	0.01	0.01
Other treatments	7.8	0.00	0.00	0.00	0.00
Health products and services n.e.c.	10.5	0.02	0.01	0.00	0.00
Transport	1,257.4	0.29	0.55	0.37	-0.50
Purchase of vehicles	442.6	0.09	0.43	0.44	-0.33
Operation of personal transport equipment	763.3	0.20	0.15	-0.09	-0.16
Transport services	51.5	0.00	-0.03	0.01	-0.01
Communications	849.6	0.05	0.06	0.11	1.07
Telephone and telefax equipment	43.8	0.05	0.06	0.11	0.03
Telephone and telefax services	805.8	0.00	0.00	0.00	1.04
Recreation and culture	1,013.3	0.04	-0.63	-0.25	-0.07
Audio-visual, photographic and information processing equipment	58.5	-0.04	-0.02	-0.03	-0.02
Other major durables for recreation and culture	20.0	0.00	0.02	0.03	0.01
Other recreational items and equipment; gardens and pets	266.6	-0.04	-0.09	-0.05	0.05
Recreational and cultural services	309.1	0.00	0.00	0.02	0.00
Newspapers, books and stationery	43.7	0.00	-0.06	-0.07	-0.03
Holidays	315.4	0.13	-0.47	-0.14	-0.09
Education	98.0	0.00	0.00	0.00	0.16
Pre primary and primary education	24.0	0.00	0.00	0.00	0.06
Secondary education	43.4	0.00	0.00	0.00	0.10
Post-secondary non-tertiary education	4.6	0.00	0.00	0.00	0.00
Tertiary education	23.6	0.00	0.00	0.00	0.00
Education not definable by level	2.5	0.00	0.00	0.00	0.00
Restaurants and hotels	442.0	0.05	0.14	0.15	0.21
Catering services	429.8	0.02	0.12	0.12	0.19
Accommodation services	12.2	0.03	0.02	0.03	0.02
Miscellaneous goods and services	1,222.6	-0.01	0.24	0.31	0.33
Personal care	427.1	-0.01	0.03	0.06	0.14
Personal effects n.e.c.	106.6	0.00	0.21	0.26	0.18
Social protection	78.2	0.00	0.00	0.00	0.00
Insurance	610.7	0.00	0.00	0.00	0.01
CPI	10,000.0	0.05	0.42	0.84	1.88

Source: Central Bureau of Statistics Aruba

APPENDIX 3

Monthly & Yearly Changes (%) and effect in the Food & catering services for November 2024, Total Population (Jun 2019 = 100)

DESCRIPTION	WEIGHT coefficient	% Change		Effect	
		Monthly	End of period	Monthly	End of period
		Oct - Nov	Nov 23 - Nov 24 12 months	Oct - Nov	Nov 23 - Nov 24 12 months
Food & catering services	1,517.5	0.3	2.7	0.048	0.441
Food at home	1,087.7	0.2	2.7	0.027	0.317
Bread and cereals	178.1	0.4	1.7	0.007	0.033
Rice	23.5	1.1	0.1	0.003	0.000
Bread	72.1	0.3	0.1	0.003	0.001
Pasta products	9.2	1.0	-0.3	0.001	0.000
Other cereals and cereal products	73.3	0.0	4.3	0.000	0.032
Meat	242.5	0.5	2.7	0.012	0.070
Bovine	67.3	0.3	-0.4	0.002	-0.003
Swine	25.5	2.7	-0.1	0.007	0.000
Poultry	75.7	0.2	8.2	0.002	0.066
Other meat and meat preparations	74.0	0.2	1.0	0.001	0.008
Fish and other seafood	49.0	1.2	-0.1	0.006	-0.001
Fish and seafood preparations	49.0	1.2	-0.1	0.006	-0.001
Milk, cheese and eggs	135.3	0.8	5.6	0.013	0.085
Cheese	55.4	-0.1	2.2	-0.001	0.014
Eggs	16.6	5.8	43.6	0.017	0.094
Milk	40.0	0.3	-2.7	0.001	-0.013
Other milk products	23.3	-1.6	-3.7	-0.004	-0.009
Oils and fats	32.2	1.3	0.8	0.005	0.003
Corn oil	2.8	-0.8	-8.0	0.000	-0.003
Butter and margarine	9.2	0.1	3.0	0.000	0.003
Other oils and fats	20.1	2.1	1.3	0.005	0.003
Fruit	97.6	-2.2	2.6	-0.022	0.025
Oranges	9.4	-10.2	22.2	-0.015	0.025
Bananas and plantains	19.9	-2.2	-4.6	-0.003	-0.007
Apples	9.3	-3.3	-9.0	-0.003	-0.009
Avocado	5.0	0.4	26.5	0.000	0.009
Grapes	9.2	1.1	-3.1	0.001	-0.003
Nuts	11.9	0.2	1.2	0.000	0.001
Lemons and mandarins	6.0	0.5	7.7	0.000	0.003
Cherries and strawberries	8.8	-0.7	0.0	-0.001	0.000
Melons and watermelons	7.7	-0.2	3.8	0.000	0.003
Papayas and pineapples	6.9	-0.4	4.3	0.000	0.002
Other fruits and fruit products	3.5	-1.7	2.4	-0.001	0.001
Potatoes and other tubers	18.2	-2.6	-0.7	-0.004	-0.001
Potatoes	12.2	-5.1	-1.0	-0.005	-0.001
Other tubers	2.0	-1.3	5.4	0.000	0.001
Sweet potatoes and yucca	4.0	2.4	-3.8	0.001	-0.002
Vegetables	89.1	2.1	3.4	0.017	0.027
Lettuce	6.8	24.8	3.2	0.005	0.001
Tomatoes	9.7	4.7	13.6	0.005	0.012
Onions and garlic	18.7	-2.4	-4.5	-0.004	-0.007
Celery and broccoli	15.3	2.7	9.7	0.003	0.011
Other vegetables	15.3	5.4	1.4	0.007	0.002
Other preserved or processed vegetables	8.4	0.3	2.1	0.000	0.002
Frozen vegetable mixtures	14.8	0.2	3.6	0.000	0.006
Sugar, jam, honey and other confectionery	42.0	-0.4	1.0	-0.002	0.005
Sugar	12.1	0.7	0.8	0.001	0.001
Jams and jellies	2.5	-1.7	-0.3	0.000	0.000
Other confectionery products	27.5	-0.9	1.2	-0.003	0.004
Food products n.e.c.	80.1	0.1	2.9	0.001	0.026
Other food products	80.1	0.1	2.9	0.001	0.026
Non-alcoholic beverages	123.6	-0.5	3.3	-0.007	0.045
Coffee and tea	20.9	0.3	1.6	0.001	0.004
Other non-alcoholic beverages	14.6	-2.4	-0.7	-0.004	-0.001
Soft and sports drinks	31.0	-0.4	-1.3	-0.001	-0.005
Fruit juices	57.1	-0.4	7.5	-0.002	0.047
Food away from home	429.8	0.4	2.6	0.021	0.125
Food and beverage consumption away from home	429.8	0.4	2.6	0.021	0.125
Other goods and services	8,482.5	0.0	0.5	0.007	0.398
Other goods	4,735.8	-0.6	-0.1	-0.256	-0.025
Other services	3,746.7	0.7	1.1	0.263	0.423
CPI	10,000	0.1	0.8	0.055	0.839

Source: Central Bureau of Statistics Aruba

APPENDIX 4

Overview of the Consumer Price Index (CPI), 2023 - 2024 (Jun 2019 = 100)

Base	Base	Base	Base	YEAR: 2024				YEAR: 2023				
				Jun-19	Jun-19	Jun-19	Jun-19	CHANGE				
								Monthly	Year-to date	Yearly	Period average	Monthly
=100.0	=100.0	=100.0	=100.0			12 months	24 months			12 months	24 months	
	<u>Jan.'23</u>	<u>Dec.'22</u>	<u>Jan.'24</u>	<u>Dec.'23</u>								
<u>Total Population</u>	106.69	106.37	108.31	108.79	-0.4	-0.4	1.5	2.9	0.3	0.3	6.6	5.8
Low Income	106.78	106.44	109.03	109.37	-0.3	-0.3	2.1		0.3	0.3	7.0	
High Income	106.63	106.32	107.96	108.48	-0.5	-0.5	1.3		0.3	0.3	6.4	
	<u>Feb.'23</u>	<u>Jan.'23</u>	<u>Feb.'24</u>	<u>Jan.'24</u>								
<u>Total Population</u>	107.59	106.69	108.57	108.31	0.2	-0.2	0.9	2.4	0.8	1.1	7.1	6.1
Low Income	107.69	106.78	109.29	109.03	0.2	-0.1	1.5		0.9	1.2	7.4	
High Income	107.52	106.63	108.20	107.96	0.2	-0.3	0.6		0.8	1.1	7.0	
	<u>Mar.'23</u>	<u>Feb.'23</u>	<u>Mar.'24</u>	<u>Feb.'24</u>								
<u>Total Population</u>	107.47	107.59	109.37	108.57	0.7	0.5	1.8	2.1	-0.1	1.0	5.9	6.2
Low Income	107.46	107.69	109.97	109.29	0.6	0.5	2.3		-0.2	1.0	6.4	
High Income	107.45	107.52	109.05	108.20	0.8	0.5	1.5		-0.1	1.1	5.7	
	<u>Apr.'23</u>	<u>Mar.'23</u>	<u>Apr.'24</u>	<u>Mar.'24</u>								
<u>Total Population</u>	107.12	107.47	109.45	109.37	0.1	0.6	2.2	1.9	-0.3	0.7	4.9	6.3
Low Income	107.31	107.46	109.87	109.97	-0.1	0.5	2.4		-0.1	0.8	5.6	
High Income	107.00	107.45	109.25	109.05	0.2	0.7	2.1		-0.4	0.6	4.5	
	<u>May'23</u>	<u>Apr.'23</u>	<u>May'24</u>	<u>Apr.'24</u>								
<u>Total Population</u>	106.60	107.12	109.41	109.45	0.0	0.6	2.6	1.8	-0.5	0.2	4.0	6.1
Low Income	106.77	107.31	109.92	109.87	0.0	0.5	2.9		-0.5	0.3	4.6	
High Income	106.49	107.00	109.14	109.25	-0.1	0.6	2.5		-0.5	0.2	3.7	
	<u>Jun'23</u>	<u>May'23</u>	<u>Jun'24</u>	<u>May'24</u>								
<u>Total Population</u>	106.20	106.60	108.72	109.41	-0.6	-0.1	2.4	1.7	-0.4	-0.2	2.8	5.9
Low Income	106.33	106.77	109.39	109.92	-0.5	0.0	2.9		-0.4	-0.1	3.3	
High Income	106.10	106.49	108.37	109.14	-0.7	-0.1	2.1		-0.4	-0.2	2.6	
	<u>Jul'23</u>	<u>Jun'23</u>	<u>Jul'24</u>	<u>Jun'24</u>								
<u>Total Population</u>	106.20	106.20	109.20	108.72	0.4	0.4	2.8	1.8	0.0	-0.2	1.7	5.6
Low Income	107.23	106.33	109.80	109.39	0.4	0.4	2.4		0.8	0.7	3.3	
High Income	105.68	106.10	108.87	108.37	0.5	0.4	3.0		-0.4	-0.6	0.9	
	<u>Aug.'23</u>	<u>Jul'23</u>	<u>Aug.'24</u>	<u>Jul'24</u>								
<u>Total Population</u>	106.94	106.20	110.01	109.20	0.7	1.1	2.9	2.0	0.7	0.5	0.5	4.9
Low Income	107.89	107.23	110.50	109.80	0.6	1.0	2.4		0.6	1.4	1.3	
High Income	106.45	105.68	109.74	108.87	0.8	1.2	3.1		0.7	0.1	0.0	
	<u>Sep.'23</u>	<u>Aug.'23</u>	<u>Sep.'24</u>	<u>Aug.'24</u>								
<u>Total Population</u>	108.00	106.94	109.58	110.01	-0.4	0.7	1.5	2.0	1.0	1.5	1.7	4.5
Low Income	108.83	107.89	110.18	110.50	-0.3	0.7	1.2		0.9	2.2	2.4	
High Income	107.57	106.45	109.26	109.74	-0.4	0.7	1.6		1.1	1.2	1.3	
	<u>Oct.'23</u>	<u>Sep.'23</u>	<u>Oct.'24</u>	<u>Sep.'24</u>								
<u>Total Population</u>	108.14	108.00	109.19	109.58	-0.4	0.4	1.0	2.0	0.1	1.7	1.7	4.1
Low Income	108.91	108.83	109.94	110.18	-0.2	0.5	0.9		0.1	2.3	2.5	
High Income	107.75	107.57	108.79	109.26	-0.4	0.3	1.0		0.2	1.3	1.4	
	<u>Nov.'23</u>	<u>Oct.'23</u>	<u>Nov.'24</u>	<u>Oct.'24</u>								
<u>Total Population</u>	108.34	108.14	109.25	109.19	0.1	0.4	0.8	1.9	0.2	1.8	1.7	3.7
Low Income	109.05	108.91	109.72	109.94	-0.2	0.3	0.6		0.1	2.4	2.3	
High Income	107.97	107.75	108.98	108.79	0.2	0.5	0.9		0.2	1.6	1.4	
	<u>Dec.'23</u>	<u>Nov.'23</u>	<u>Dec.'24</u>	<u>Nov.'24</u>								
<u>Total Population</u>	108.79	108.34							0.4	2.3	2.3	3.4
Low Income	109.37	109.05							0.3	2.7	2.7	
High Income	108.48	107.97							0.5	2.0	2.0	

Source: Central Bureau of Statistics Aruba

APPENDIX 5

Prices of crude oil, utilities and gasoline, 2001 - 2024

Month	Crude oil ¹	Electricity components							
		Total energy charge ²			Fixed charge ³	Electricity ⁴	Water ⁵	Gasoline ⁶	Diesel ⁶
		≤ 500 kWh	501 - 1000 kWh	> 1001 kWh					
Average 2001	26.01	24.59	22.09	22.09	0.00	172.79	89.40	128.34	90.10
Average 2002	26.06	24.89	22.39	22.39	0.00	174.91	90.82	127.20	88.68
Average 2003	34.49	27.02	24.52	24.52	0.00	190.38	99.21	139.21	100.18
Average 2004	41.31	27.18	24.68	24.68	0.00	191.57	100.02	152.51	113.05
Average 2005	56.36	31.10	28.60	28.60	0.00	219.97	113.69	167.74	136.04
Average 2006	66.12	35.91	33.41	33.41	0.00	254.88	128.70	176.22	149.77
Average 2007	72.08	36.59	34.09	34.09	0.00	259.84	133.59	200.43	168.38
Average 2008	99.87	45.67	43.17	43.17	0.00	325.67	161.80	228.19	214.48
Average 2009	61.46	37.33	34.83	34.83	0.00	265.17	139.60	175.15	142.53
Average 2010	79.22	43.92	41.42	41.42	0.00	312.98	159.21	193.43	163.22
Average 2011	94.74	47.58	47.57	47.57	0.00	345.14	177.47	229.48	203.46
Average 2012	94.25	47.68	51.21	53.46	0.00	353.85	171.13	235.53	210.07
Average 2013	98.00	41.10	44.90	58.40	0.00	306.75	137.05	229.48	205.83
Average 2014	93.49	42.58	45.32	57.77	0.63	315.71	137.05	224.24	200.21
Average 2015	48.71	47.02	46.56	55.87	2.50	342.59	137.05	179.74	147.80
Average 2016	43.17	40.40	41.80	47.64	12.50	308.76	137.05	165.87	131.12
Average 2017	50.85	34.52	35.72	45.93	12.50	265.65	137.05	180.79	147.69
Average 2018	65.08	34.52	35.72	45.93	12.50	265.65	137.05	204.95	177.59
Average 2019	56.84	34.52	35.72	45.93	12.50	265.65	137.05	202.67	176.53
Average 2020	39.25	31.09	31.99	42.09	12.50	240.09	137.05	177.93	143.26
Average 2021	67.78	31.09	31.99	42.09	12.50	240.09	137.05	223.34	181.95
Average 2022	95.16	34.19	35.18	46.29	12.50	262.78	150.17	275.90	263.17
January-23	78.01	38.53	39.65	52.16	12.50	294.56	168.73	243.80	246.60
February-23	76.99	38.53	39.65	52.16	12.50	294.56	168.73	262.50	260.30
March-23	73.51	38.53	39.65	52.16	12.50	294.56	168.73	257.60	234.80
April-23	79.51	38.53	39.65	52.16	12.50	294.56	168.73	262.40	231.50
May-23	71.86	35.80	36.84	48.47	12.50	274.57	168.73	266.70	221.50
June-23	70.12	35.80	36.84	48.47	12.50	274.57	168.73	255.90	209.10
July-23	75.57	35.80	36.84	48.47	12.50	274.57	168.73	256.40	212.50
August-23	81.34	35.80	36.84	48.47	12.50	274.57	168.73	268.80	225.60
September-23	88.11	35.80	36.84	48.47	12.50	274.57	168.73	283.70	251.70
October-23	85.94	35.80	36.84	48.47	12.50	274.57	168.73	277.90	260.80
November-23	78.48	35.80	36.84	48.47	12.50	274.57	168.73	248.60	247.80
December-23	72.61	35.80	36.84	48.47	12.50	274.57	168.73	237.70	227.20
Average 2023	77.67	36.71	37.78	49.70	12.50	281.24	168.73	260.17	235.78
January-24	73.56	35.80	36.84	48.47	12.50	274.57	168.73	232.90	213.60
February-24	76.93	35.80	36.84	48.47	12.50	274.57	168.73	245.40	227.80
March-24	81.01	35.80	36.84	48.47	12.50	274.57	168.73	255.60	236.40
April-24	85.50	35.80	36.84	48.47	12.50	274.57	168.73	266.90	230.10
May-24	80.31	35.80	36.84	48.47	12.50	274.57	168.73	269.00	228.20
June-24	79.89	35.80	36.84	48.47	12.50	274.57	168.73	257.60	217.70
July-24	82.57	35.80	36.84	48.47	12.50	274.57	168.73	251.60	218.50
August-24	76.79	35.80	36.84	48.47	12.50	274.57	168.73	257.60	220.70
September-24	70.30	35.80	36.84	48.47	12.50	274.57	168.73	251.20	210.20
October-24	72.48	35.80	36.84	48.47	12.50	274.57	168.73	234.90	201.40
November-24	69.60	34.31	35.31	46.45	12.50	263.67	168.73	238.40	206.20
December-24									
Average 2024	77.18	35.66	36.70	48.29	12.50	273.58	168.73	251.01	219.16

Source: Central Bureau of Statistics Aruba

¹ Average West Texas Intermediate (WTI) crude oil price per barrel in US\$ (Source: U.S. Energy Information Administration)

² Total energy charge in Afl. cents per kWh

³ Fixed charge was introduced in October 2014 at Afl. 2.50

⁴ Electricity price in Afl. is based on an average household usage of 725.5 kWh

⁵ Water price in Afl. is based on an average household usage

⁶ Gasoline and diesel prices in Afl. cents per liter

APPENDIX 6

