

Consumer Price Index, base period June 2019

July 2024

The Central Bureau of Statistics presents the most important findings for the Consumer Price Index (CPI) for the month of July 2024.

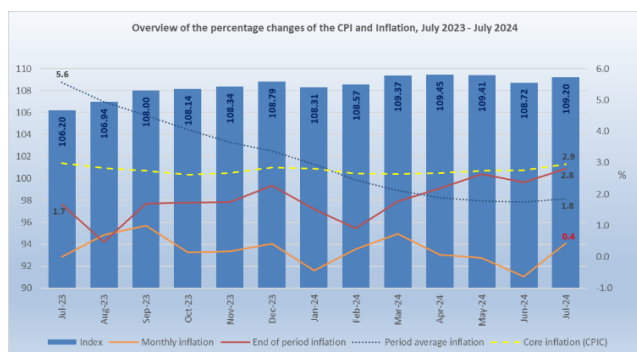


Consumer Price Index for the month of

The CPI for July 2024 (109.20), shows an increase of 0.4% compared to the index of June 2024 (108.72).

The percentage change of the CPI over the last twelve (12) months (July 2023 to July 2024) is 2.8, an increase of 1.1 percentage points (ppts) compared to the percentage change for the same period of last year (1.7%).

The period average (last 24 months) percentage change of the CPI for the periods July 2022 to July 2023 and July 2023 to July 2024 is 1.8%, a decrease of 3.8 ppts compared to the period average percentage change over the periods July 2021 to July 2022 and July 2022 to July 2023 (5.6%).

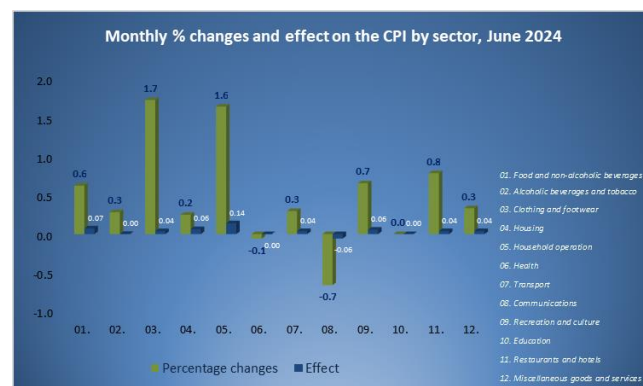


During this month, nine (9) of the twelve (12) sectors registered increases in prices. The increases that had the greatest influence on the CPI were registered for the "Household operation" (1.6%) and "Food and non-alcoholic beverages" (0.6%) sectors, which contributed with an effect of 0.14 and 0.07 ppts, respectively. The increases in the remaining sectors had an effect of 0.28 ppts on the CPI of July 2024.

Aforementioned increases were partially offset mainly by a decrease in the index for the "Communications" (-0.7%) sector, which caused an effect of -0.06 ppts. The decrease in the remaining sector had an insignificant effect on the CPI of July 2024.

The increase in the "Household operation" sector was mainly due to an increase in the category "Household appliances" (6.4%), which contributed to an effect of 0.13 ppts. The increase in the "Food and non-alcoholic beverages" sector was mainly due to an increase of 0.6% in the category "Food", which contributed to an effect of 0.06 ppts.

The decrease in the "Communications" sector was due to a decrease in the category "Telephone and telefax equipment" (-15.1%), which contributed to an effect of -0.06 ppts.



Consumption basket

The consumption basket of the CPI consists of 408 goods and services. Compared to June 2024, 46.1% of these products had an increase in price, causing an effect of 1.00 ppt, while 36.0% showed a decrease, contributing to an effect of -0.57 ppts and the remaining 17.9% had no change in price. The prices of goods increased by 0.3% and caused an influence of 0.15 ppts. The prices of services showed an increase of 0.7% and had an effect of 0.28 ppts on the CPI of July 2024.

CPI (BASE JUN 2019 = 100)		July-2024					CPI-C			SUBSISTENCE LEVEL			
Month	Year	Index	Monthly	Year-to-date	End of period	Period average	Goods	Services	CPIC	Energy	Food	1 adult	2 adults + 2 children
July	2024	109.20 ↑	0.4 ↑	0.4 ↑	2.8 ↑	1.8 ↑	0.3 ↑	0.7 ↑	2.9 ↑	-2.9 ↓	2.4 ↑	2,619 ↑	5,499 ↑
June	2024	108.72 ↓	-0.6 ↓	-0.1 ↓	2.4 ↓	1.7 ↑	-1.1 ↓	0.01 ↑	2.8 ↑	-2.8 ↓	2.7 ↑	2,606 ↓	5,473 ↓
July	2023	106.20	0.01	-0.2	1.7	5.6	-1.8	2.6	3.0	14.0	10.6	2,540	5,334

Core inflation

The CPIC (core inflation) - CPI excluding the effect of energy and food – was 2.9% in July 2024. The energy index - which consists of the products: electricity, water, gasoline and diesel – was -2.9%. The food index showed an increase of 2.4%.

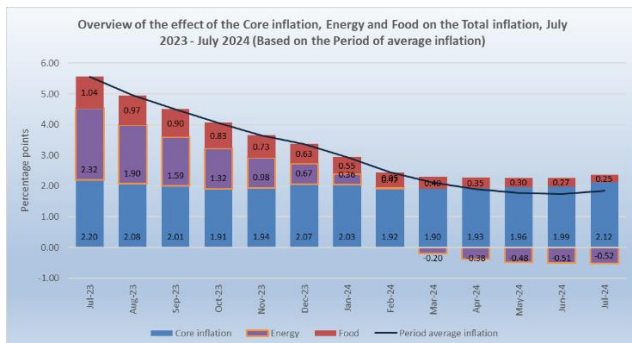
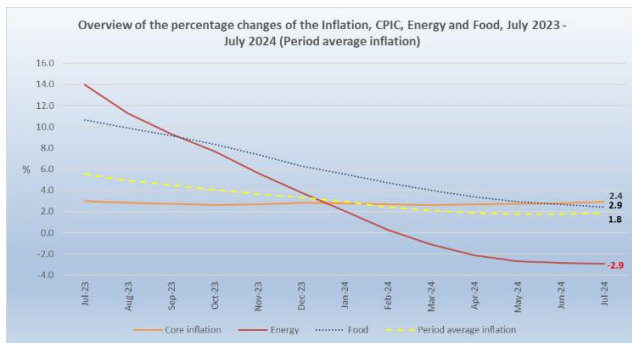
What is CPIC?

The CPIC (core inflation) is a portion of the inflation where certain items, which have volatile price movements are excluded, such as food products and energy. When calculating the core inflation, the most volatile components are eliminated from the inflation. The core inflation index is used to assess the medium and long-term trends of the general level of prices. For purposes of economic policy-making, especially monetary policy, many economists focus on the proportion of the core inflation, as this allows a more in-depth evaluation of the recent inflation developments in the economy. The annual average of the CPI is used to calculate the CPIC.

The CPIC is calculated by comparing the average index for the most recent 12-month period compared with the preceding 12-month period.

The three main uses of a CPI are:

1. a calculation method to compensate employees due to the loss of purchasing power, adjusting their salaries, with the percentage change rate of the CPI, which is known as indexation.
2. a tool used in National Accounts to adjust components of the gross domestic product (GDP) from nominal terms to real terms. (For example, by eliminating the effect of the price changes from the consumption value)
3. a means commonly used by governments and central banks to set inflation targets.



Subsistence level

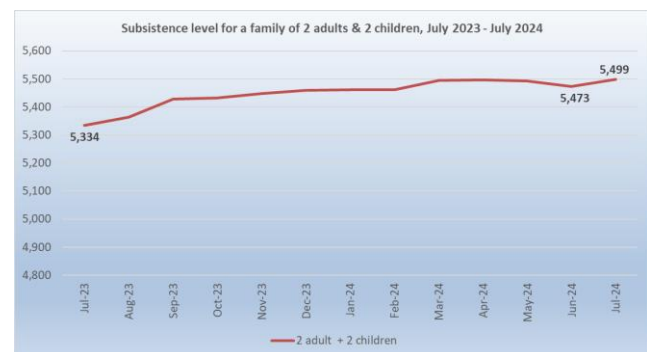
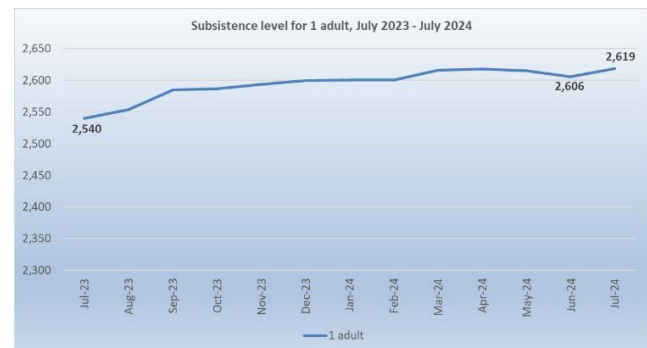
The subsistence level for a household consisting of two (2) adults and two (2) children (aged 0-15 years) in July 2024 is Afl. 5,499, an increase of Afl. 26 compared to June 2024 (Afl. 5,473). The subsistence level for a single adult household is Afl. 2,619, an increase of Afl. 13 compared to June 2024 (Afl. 2,606).

What is the Subsistence level and how is it adjusted?

The CBS defines the subsistence level as the minimum level of income that is perceived as necessary for a person or family to be able to function in the society in an adequate and socially acceptable manner. When the definition of subsistence level is used, it refers in reality to a "Social subsistence level" and not the literal definition "the money needed to purchase those goods and services deemed necessary for living a life free of basic deprivation" (United Nations).

A subsistence level index was created by calculating the cost of the essential resources that an average adult consumes during a month. Each month this index is adjusted, based on the prices of food, clothing, shelter, transportation, and other items in the basket.

The current subsistence level is based on the "Subsistence level 2010" report published by the CBS in December 2010, and is updated monthly according to the CPI. The reference unit used in this report is of a household consisting of two adults and two children (0 to 14 years). The total weight of such household is 2.1 (1.0 + 0.5 + 0.3 + 0.3).



The subsistence level in July 2024

The subsistence level is the minimum level of income which is perceived necessary to achieve an adequate standard of living in a given country. The subsistence level is usually determined by estimating the cost of all the essential resources that an average adult consumes in one month or year. This is commonly called a basic needs index, and varies according to the price of food, clothing, housing, transport and other items in the "basket". Equivalent scales are used to adjust the assumed standard of living, of households of different sizes and composition. The scale assigns a weight of 1.0 for the first adult and 0.5 for each additional adult in the household (aged 15+) and a weight of 0.3 for each child (aged 0-14 years). The subsistence level is based on figures of the report "Bestaansminimum 2010" and is monthly updated for inflation using the monthly CPI. The reference unit used in this report is a household consisting of two (2) adults and two (2) children (aged 0-14 years).

In July 2024 the monthly subsistence level for a household consisting of two (2) adults and two (2) children (aged 0-14 years) (Afl. 5,499) showed an increase of Afl. 165 compared to July 2023 (Afl. 5,334) and was mainly caused by increases of Afl. 62 and Afl. 47 in the sectors "Food and non-alcoholic beverages" and "Housing".

Table 1 Monthly subsistence level in Aruba (in Afl.) by sector for a family of 2 adults and 2 children (aged 0-14 years)

Sector	Jul-23	Jul-24	Absolute Change
Food and non-alcoholic beverages	2,238	2,300	62
Clothing and footwear	234	241	7
Housing	1,606	1,653	47
Household operation	115	113	-2
Health	80	83	3
Transport	321	332	11
Communications	161	170	9
Recreation and culture	158	159	1
Education	78	97	19
Miscellaneous goods and services	342	350	8
Total	5,334	5,499	165

Source: Central Bureau of Statistics Aruba

Table 2 Monthly Subsistence level in Aruba (in Afl.) by family size and composition, July 2024 (Base period Oct. 2010)

Period	Escala di ekivalencia				
	1	1.3	1.5	1.8	2.1
	1 adult	1 adult + 1 child	2 adults	2 adults + 1 child	2 adults + 2 children
Jul-23	2,540	3,302	3,810	4,572	5,334
Aug-23	2,554	3,320	3,831	4,598	5,364
Sep-23	2,585	3,360	3,877	4,653	5,428
Oct-23	2,587	3,363	3,880	4,656	5,432
Nov-23	2,594	3,372	3,891	4,669	5,447
Dec-23	2,600	3,380	3,900	4,680	5,460
Jan-24	2,601	3,381	3,901	4,681	5,462
Feb-24	2,601	3,381	3,901	4,682	5,462
Mar-24	2,616	3,401	3,924	4,709	5,494
Apr-24	2,618	3,403	3,927	4,712	5,497
May-24	2,615	3,400	3,923	4,708	5,492
Jun-24	2,606	3,388	3,909	4,691	5,473
Jul-24	2,619	3,404	3,928	4,714	5,499

Source: Central Bureau of Statistics Aruba

In July 2024, the monthly subsistence level for a single adult household is Afl 2,619, which represents an income deficit of Afl. 633, a decrease of Afl. 14 compared to the deficit observed one year ago (Afl. 647). This deficit is the second highest registered over a period of six (6) years for the month July.

Table 3 Monthly income surplus/deficit (in Afl.) for a single adult household for July, 2019 - 2024

Period	1 adult	Minimum	
		wage	Surplus/deficit
2019	2,341	1,762	-579
2020	2,267	1,815	-452
2021	2,293	1,815	-478
2022	2,440	1,815	-625
2023	2,540	1,893	-647
2024	2,619	1,986	-633

Source: Central Bureau of Statistics Aruba

Table 4 Overview of the percentage changes of the CPI and the subsistence level, July 2023 - July 2024 (Jun 2019=100)

	Jul-23	Aug-23	Sep-23	Oct-23	Nov-23	Dec-23	Jan-24	Feb-24	Mar-24	Apr-24	May-24	Jun-24	Jul-24
Index CPI													
CPI (Monthly)	106.20	106.94	108.00	108.14	108.34	108.79	108.31	108.57	109.37	109.45	109.41	108.72	109.20
CPI (12-month average)	106.64	106.68	106.83	106.98	107.14	107.34	107.47	107.56	107.72	107.91	108.14	108.35	108.60
Percentage changes													
Monthly	0.0	0.7	1.0	0.1	0.2	0.4	-0.4	0.2	0.7	0.1	-0.03	-0.6	0.4
Year-to-date	-0.2	0.5	1.5	1.7	1.8	2.3	-0.4	-0.2	0.5	0.6	0.6	-0.1	0.4
End of period	1.7	0.5	1.7	1.7	1.7	2.3	1.5	0.9	1.8	2.2	2.6	2.4	2.8
Period average	5.6	4.9	4.5	4.1	3.7	3.4	2.9	2.4	2.1	1.9	1.8	1.7	1.8
Index Goods													
Goods (Monthly)	106.36	107.25	108.42	108.51	108.29	108.24	107.77	108.18	108.91	109.58	109.68	108.49	108.77
Goods (12-month average)	108.91	108.78	108.77	108.79	108.67	108.63	108.50	108.32	108.24	108.22	108.29	108.31	108.51
Percentage changes													
Monthly	-1.8	0.8	1.1	0.1	-0.2	0.0	-0.4	0.4	0.7	0.6	0.1	-1.1	0.3
Year-to-date	-2.3	-1.4	-0.4	-0.3	-0.5	-0.5	-0.4	-0.1	0.6	1.2	1.3	0.2	0.5
End of period	0.9	-1.4	-0.1	0.3	-1.3	-0.5	-1.4	-1.9	-0.9	-0.2	0.8	0.2	2.3
Period average	8.6	7.5	6.6	5.7	4.6	3.8	2.8	1.7	0.9	0.3	-0.2	-0.5	-0.4
Index Services													
Services (Monthly)	105.98	106.51	107.40	107.64	108.41	109.55	109.07	109.12	110.01	109.26	109.05	109.05	109.79
Services (12-month average)	103.47	103.75	104.13	104.46	105.00	105.55	106.05	106.49	106.99	107.48	107.94	108.42	108.74
Percentage changes													
Monthly	2.6	0.5	0.8	0.2	0.7	1.0	-0.4	0.0	0.8	-0.7	-0.2	0.0	0.7
Year-to-date	2.9	3.4	4.3	4.5	5.3	6.4	-0.4	-0.4	0.4	-0.3	-0.5	-0.5	0.2
End of period	2.8	3.3	4.4	3.9	6.3	6.4	5.8	5.1	5.8	5.7	5.3	5.6	3.6
Period average	1.4	1.5	1.6	1.8	2.4	2.8	3.2	3.5	3.8	4.3	4.6	5.0	5.1
Indices CPIC, Energy & Food													
CPIC (12-month average)	103.53	103.68	103.86	104.05	104.36	104.73	104.98	105.18	105.44	105.74	106.02	106.27	106.58
Energy (12-month average)	116.82	116.23	116.07	116.00	115.44	114.96	114.51	113.99	113.66	113.40	113.43	113.45	113.41
Food (12-month average)	113.17	113.51	113.90	114.21	114.34	114.42	114.68	114.85	115.04	115.25	115.46	115.68	115.93
Percentage changes													
CPIC (Period average)	3.0	2.8	2.7	2.6	2.7	2.9	2.8	2.7	2.6	2.7	2.7	2.8	2.9
Energy (Period average)	14.0	11.3	9.3	7.7	5.6	3.8	2.1	0.3	-1.1	-2.1	-2.7	-2.8	-2.9
Food (Period average)	10.6	9.9	9.2	8.4	7.4	6.3	5.5	4.7	4.0	3.4	3.0	2.7	2.4
Subsistence level (Monthly)													
1 adult	2,540	2,554	2,585	2,587	2,594	2,600	2,601	2,601	2,616	2,618	2,615	2,606	2,619
2 adults + 2 children	5,334	5,364	5,428	5,432	5,447	5,460	5,462	5,462	5,494	5,497	5,492	5,473	5,499
Changes in AfI													
1 adult (Monthly)	-1	14	31	2	7	6	1	0	15	2	-3	-9	13
1 adult (Yearly)	100	41	57	58	41	40	47	33	51	54	65	65	79
2 adults + 2 children (Monthly)	-2	30	64	4	15	13	2	0	32	3	-5	-19	26
2 adults + 2 children (Yearly)	210	86	119	121	85	84	99	69	108	113	138	137	165

Source: Central Bureau of Statistics Aruba

Table 5 Percentage change by sector

Sector	Weight	Effect	Percentage changes			
			Monthly	Year-to-date	End of period	Period average
	:coefficient	Jun - Jul	Jun - Jul	Dec - Jul	Jul 23 - Jul 24	Jul 22/23 - Jul 23/24
CPI	10,000.0	0.43	0.4	0.4	2.8	1.8
01. Food and non-alcoholic beverages	1,125.3	0.07	0.6	1.6	2.8	2.8
02. Alcoholic beverages and tobacco	81.9	0.00	0.3	0.7	0.4	2.3
03. Clothing and footwear	625.9	0.04	1.7	-4.0	3.2	-3.1
04. Housing	2,553.3	0.06	0.2	0.5	2.9	1.4
05. Household operation	741.3	0.14	1.6	-3.1	-2.4	0.0
06. Health	235.8	0.00	-0.1	-2.3	3.4	2.6
07. Transport	1,815.4	0.04	0.3	4.8	3.5	-5.0
08. Communications	706.3	-0.06	-0.7	0.1	5.9	15.9
09. Recreation and culture	891.2	0.06	0.7	-5.0	0.5	-2.0
10. Education	83.0	0.00	0.0	0.0	24.8	24.5
11. Restaurants and hotels	373.7	0.04	0.8	3.8	5.9	5.8
12. Miscellaneous goods and services	767.0	0.04	0.3	1.2	2.4	2.8

Source: Central Bureau of Statistics Aruba

Table 6 Categories with the greatest positive effect on the CPI of July 2024

Category	Monthly change	Effect
Household appliances	6.4	0.13
Clothing	4.6	0.08
Holidays	3.0	0.07
Food	0.6	0.06
Maintenance and repair of the dwelling	1.0	0.06

Source: Central Bureau of Statistics Aruba

Table 7 Categories with the greatest negative effect on the CPI of July 2024

Category	Monthly change	Effect
Telephone and telefax equipment	-15.1	-0.06
Operation of personal transport equipment	-0.6	-0.05
Other recreational items and equipment; gardens and pets	-1.5	-0.04
Footwear	-7.7	-0.04

Source: Central Bureau of Statistics Aruba

Change in prices of crude oil, utilities, gasoline and diesel in July 2024

The prices of utilities (electricity and water), gasoline and diesel are for the greater part determined by international crude oil prices. In July 2024 the average price per barrel of crude oil (US\$ 82.57) had an increase of US\$ 2.68 (3.4%) compared to June 2024 (US\$ 79.89).

The prices of electricity and water did not change compared to June 2024. Subsequently, the average electricity price per household remained at Afl. 274.57, while the average price of water per household remained at Afl. 168.73.

In July 2024 the price of gasoline registered a decrease of Afl. 6.00 cents (-2.3%) and had an effect of -0.11 ppts on the CPI. The price of diesel registered a decrease of Afl. 0.80 cents (0.4%) and had an insignificant effect on the CPI of July 2024.

In July 2024, utilities, gasoline and diesel as a group, showed a decrease in price of 0.7% compared to June 2024 and had an influence of -0.11 ppts on the CPI, while the remaining 404 goods and services, as a group, show an increase of 0.7% and had an effect of 0.55 ppts on the CPI.

Table 9 Monthly and yearly % change and effect on the CPI of goods which are dependent on crude oil prices, July 2024

Category	Weight	Monthly		Yearly	
		Change	Effect	Change	Effect
Electricity	810.2	0.0	0.00	0.0	0.00
Gasoline	430.5	-2.3	-0.11	-1.9	-0.09
Water	367.3	0.0	0.00	0.0	0.00
Diesel	30.2	0.4	0.00	2.8	0.01
Total group	1,638.1	-0.7	-0.11	-0.5	-0.08
Remaining goods and services	8,361.9	0.7	0.55	3.5	2.90
CPI	10,000.0	0.4	0.43	2.8	2.82

Source: Central Bureau of Statistics Aruba

Table 8 Prices of crude oil, utilities, gasoline and diesel, 2023 - 2024

Month	2023							2024						
	Crude oil	Total energy charge		Electricity	Water	Gasoline	Diesel	Crude oil	Total energy charge		Electricity	Water	Gasoline	Diesel
		≤ 500 kWh	501-1000 kWh						≤ 500 kWh	501-1000 kWh				
January	78.01	38.53	39.65	294.56	168.73	243.80	246.60	73.56	35.80	36.84	274.57	168.73	232.90	213.60
April	76.99	38.53	39.65	294.56	168.73	262.50	260.30	76.93	35.80	36.84	274.57	168.73	245.40	227.80
March	73.51	38.53	39.65	294.56	168.73	257.60	234.80	81.01	35.80	36.84	274.57	168.73	255.60	236.40
April	79.51	38.53	39.65	294.56	168.73	262.40	231.50	85.50	35.80	36.84	274.57	168.73	266.90	230.10
May	71.86	35.80	36.84	274.57	168.73	266.70	221.50	80.31	35.80	36.84	274.57	168.73	269.00	228.20
June	70.12	35.80	36.84	274.57	168.73	255.90	209.10	79.89	35.80	36.84	274.57	168.73	257.60	217.70
July	75.57	35.80	36.84	274.57	168.73	256.40	212.50	82.57	35.80	36.84	274.57	168.73	251.60	218.50
August	81.34	35.80	36.84	274.57	168.73	268.80	225.60							
September	88.11	35.80	36.84	274.57	168.73	283.70	251.70							
October	85.94	35.80	36.84	274.57	168.73	277.90	260.80							
November	78.48	35.80	36.84	274.57	168.73	248.60	247.80							
December	72.61	35.80	36.84	274.57	168.73	237.70	227.20							
Yearly Average	77.67	36.71	37.78	281.24	168.73	260.17	235.78	79.97	35.80	36.84	274.57	168.73	254.14	224.61

Source: Central Bureau of Statistics Aruba

¹ Average West Texas Intermediate (WTI) crude oil price per barrel in US\$ (Source: U.S. Energy Information Administration)

² Total energy charge in Afl. cents per kWh

³ Electricity price in Afl. is based on an average household usage of 725.5 kWh

⁴ Water price in Afl. is based on an average household usage in m³

⁵ Gasoline and diesel prices in Afl. cents per liter

Change in prices of Food & catering services in July 2024

The “Food & catering services” index showed an increase of 0.4% in July 2024, after a decrease of 0.1% in June 2024. The index for “Food at home” showed an increase of 0.6% in July, as eight (8) of the eleven (11) “Food at home” indices increased in July 2024. The “Potatoes and other tubers” index registered the largest increase (8.6%) in July 2024. Furthermore, other significant increases were posted in the indices for “Fish and other seafood” (2.3%), “Vegetables” (2.2%) and “Food products n.e.c.” (1.4%). The largest decrease in July 2024 was registered for the index of “Fruit” (-1.5%).

The index for “Food away from home” was unchanged in July 2024.

In July 2024, “Food at home” and “Food away from home” as a group showed an increase in price of 0.4% compared to June 2024, and had an effect of 0.07 ppts on the CPI, while the remaining goods and services, as a group, experienced an increase in price of 0.4%, causing an effect of 0.36 ppts on the CPI.

Table 11 Percentage change and effect on the CPI of Food at home and Food away from home, July 2024

Category	Weight	Monthly change	Effect
<i>Food at home</i>	1,087.7	0.6	0.07
<i>Food away from home</i>	429.8	0.0	0.00
<i>Total group</i>	1,517.5	0.4	0.07
<i>Remaining goods and services</i>	8,482.5	0.4	0.36
<i>CPI</i>	10,000.0	0.4	0.43

Source: Central Bureau of Statistics Aruba

Table 10 Percentage change for Food & catering services

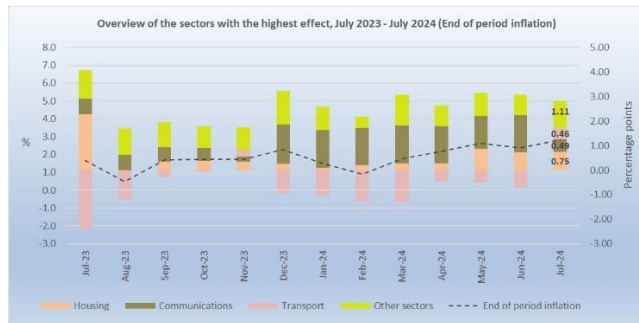
	Weight coefficient	Indices			Percentage changes			Effect	
		Jul-23	Jun-24	Jul-24	Monthly May - Jun	Monthly Jun - Jul	End of period Jul 23 - Jul 24	Monthly Jun - Jul	End of period Jul 23 - Jul 24
Food & catering services	1,517.5	115.77	118.73	119.25	-0.1	0.4	3.0	0.073	0.497
Food at home	1,087.7	114.63	117.07	117.80	-0.2	0.6	2.8	0.073	0.325
<i>Bread and cereals</i>	178.1	118.26	121.65	121.59	0.2	-0.1	2.8	-0.001	0.056
<i>Meat</i>	242.5	116.73	118.43	119.07	1.2	0.5	2.0	0.014	0.054
<i>Fish and other seafood</i>	49.0	110.85	106.79	109.29	-1.0	2.3	-1.4	0.011	-0.007
<i>Milk, cheese and eggs</i>	135.3	122.71	125.10	126.13	-1.1	0.8	2.8	0.013	0.044
<i>Oils and fats</i>	32.2	125.01	121.67	120.62	-0.5	-0.9	-3.5	-0.003	-0.013
<i>Fruit</i>	97.6	99.73	106.10	104.56	-2.9	-1.5	4.8	-0.014	0.044
<i>Potatoes and other tubers</i>	18.2	88.21	82.36	89.47	-1.2	8.6	1.4	0.012	0.002
<i>Vegetables</i>	89.1	96.11	96.76	98.92	-1.4	2.2	2.9	0.018	0.024
<i>Sugar, jam, honey and other confectionery</i>	42.0	122.56	129.91	130.25	0.0	0.3	6.3	0.001	0.030
<i>Food products n.e.c.</i>	80.1	118.73	122.48	124.14	-0.3	1.4	4.6	0.012	0.041
<i>Non-alcoholic beverages</i>	123.6	118.90	122.44	123.29	0.4	0.7	3.7	0.010	0.012
Food away from home	429.8	118.65	122.91	122.91	0.2	0.0	3.6	0.000	0.172
Other goods and services	8,482.5	104.49	106.93	107.40	-0.7	0.4	2.8	0.361	2.320
<i>Other goods</i>	4,735.8	104.46	106.52	106.70	-1.3	0.2	2.1	0.078	0.996
<i>Other services</i>	3,746.7	104.53	107.46	108.28	0.0	0.8	3.6	0.283	1.324
CPI	10,000.0	106.20	108.72	109.20	-0.6	0.4	2.8	0.434	2.817

Source: Central Bureau of Statistics Aruba

CPI for the period July 2023 – July 2024

Consumer Price Index

Over the last 12 months, the CPI increased by 2.8%. Eleven (11) of the twelve (12) sectors registered increases in prices. The increases that had the greatest influence on the CPI were registered for the “Housing” (2.9%), “Communications” (5.9%), “Transport” (3.5%), “Food and non-alcoholic beverages” (2.8%), “Restaurants and hotels” (5.9%) and “Miscellaneous goods and services” (2.4%) sectors, which contributed with an effect of respectively, 0.75, 0.49, 0.46, 0.32, 0.29 and 0.28 ppts. The increases in the remaining sectors had an effect of 0.43 ppts on the CPI of July 2023 - July 2024.



Aforementioned increases were partially offset by a decrease in the index for the “Household operation” (-2.4%) sector, causing an effect of -0.21 ppts.

The increase in the “Housing” sector was mainly due to an increase in the category “Maintenance and repair of the dwelling” (12.4%), which contributed to an effect of 0.65 ppts. The increase in the “Communications” sector was mainly due to an increase in the category “Telephone and telefax services” (6.1%), which contributed to an effect of 0.49 ppts. The increase in the “Transport” sector was mainly due to an increase in the category “Purchase of vehicles” (10.6%), which contributed with an effect of 0.43 ppts. The increase in the “Food and non-alcoholic beverages” sector was mainly due to an increase in the category “Food” (2.6%), which contributed with an effect of 0.27 ppts. The increase in the “Restaurants and hotels” sector was mainly due to an increase of 3.6% in the category “Catering services”, which contributed to an effect of 0.17 ppts. The increase in the “Miscellaneous goods and services” sector was mainly due to increases in the categories “Personal care” (3.5%) and “Personal effects n.e.c.” (12.4%), which contributed with an effect of 0.13 and 0.15 ppts, respectively.

The decrease in the “Household operation” sector was mainly due to a decrease in the category “Tools and equipment for house and garden” (-21.8%), which contributed to an effect of -0.18 ppts.

Consumption basket

Over the last year 54.2% of the products in the consumption basket had an increase in price, causing an effect of 4.01 ppts, while 37.3% showed a decrease, contributing to an effect of -1.19 ppts and the remaining 8.6% had no change in price. The prices of goods (2.3%) and services (3.6%) increased over the last year and had an influence of respectively, 1.32 and 1.50 ppts.

Subsistence level

Over the last 12 months, the subsistence level for a household consisting of two (2) adults and two (2) children (aged 0-15 years) registered an increase of Afl. 165, from Afl. 5,334 in July 2023 to Afl. 5,499 in July 2024. This increase was mainly due to increases in the “Food and non-alcoholic beverages” (Afl. 62) and “Housing” (Afl. 47) sectors.

Change in prices of crude oil, utilities, gasoline and diesel

The average price per barrel of crude oil registered an increase of US\$ 7.00 (9.3%) from US\$ 75.57 in July 2023 to US\$ 82.57 in July 2024.

The energy index decreased by 0.5% over the past 12 months and had an influence of -0.08 ppts. The index of “Gasoline” (-1.9%) registered a decrease over the last year, contributing with an effect of -0.09 ppts, while the index of “Diesel” registered an increase of 2.8% and had an effect of 0.01 ppt on the yearly CPI. The indices of “Electricity” and “Water” did not register any changes over this period. The remaining 404 goods and services, as a group, show an increase of 3.5% and had an effect of 2.90 ppts on the CPI.

Change in prices of Food & catering services

Over the last 12 months, the “Food & catering services” increased by 3.0%. The “Food at home” index showed an increase of 2.8%, where nine (9) of the “Food at home” food groups increased over the period.

The “Sugar, jam, honey and other confectionery” index increased by 6.3%, the largest increase among the “Food at home” food groups. Furthermore, other significant increases were posted in the indices for “Fruit” (4.8%), “Food products n.e.c.” (4.6%), “Non-alcoholic beverages” (3.7%), “Vegetables” (2.9%), “Bread and cereals” (2.8%) and “Milk, cheese and eggs” (2.8%). The largest decrease during this period was registered in the index for “Oils and fats” (-3.5%).

The index for “Food away from home” increased by 3.6% over the last 12 months.

APPENDIX 1

Monthly & Yearly Changes (%) in the Consumer Price Index for July 2024, Total Population (Jun 2019 = 100)

DESCRIPTION	WEIGHT coefficient	2023 Jul	2023 Dec	2024 Jun	2024 Jul	Monthly Jun - Jul	Ytd Dec - Jul	End of period Jul 23 - Jul 24 12 months	Period average Jul 22/23 - Jul 23/24 24 months
Food and non-alcoholic beverages	1,087.7	114.63	115.99	117.07	117.80	0.6	1.6	2.8	2.8
Food	964.1	114.08	115.38	116.38	117.10	0.6	1.5	2.6	2.4
Non-alcoholic beverages	123.6	118.90	120.73	122.44	123.29	0.7	2.1	3.7	5.5
Alcoholic beverages and tobacco	78.2	110.42	110.09	110.51	110.82	0.3	0.7	0.4	2.3
Alcoholic beverages for consumption at home	62.2	108.77	108.28	108.42	108.80	0.3	0.5	0.0	1.8
Tobacco	16.0	116.84	117.14	118.62	118.67	0.0	1.3	1.6	4.2
Clothing and footwear	276.8	85.72	92.15	86.99	88.49	1.7	-4.0	3.2	-3.1
Clothing	212.8	87.59	93.25	86.84	90.80	4.6	-2.6	3.7	-3.8
Footwear	64.0	79.51	88.50	87.49	80.79	-7.7	-8.7	1.6	-0.7
Housing	2,522.2	108.76	111.36	111.65	111.93	0.2	0.5	2.9	1.4
Actual rentals for housing	666.7	106.26	106.92	107.72	107.85	0.1	0.9	1.5	1.5
Imputed rentals for housing	34.4	94.59	94.59	94.59	94.59	0.0	0.0	0.0	-0.2
Maintenance and repair of the dwelling	517.0	108.47	120.29	120.68	121.87	1.0	1.3	12.4	12.4
Water supply and miscellaneous services relating to the dwelling	463.6	121.83	121.83	121.83	121.83	0.0	0.0	0.0	0.7
Electricity, gas and other fuels	840.4	104.30	104.30	104.30	104.30	0.0	0.0	0.0	-4.7
Household operation	929.2	103.50	104.24	99.43	101.06	1.6	-3.1	-2.4	0.0
Furniture, furnishings, carpets and other floor coverings	128.8	85.62	75.66	81.67	79.72	-2.4	5.4	-6.9	-3.3
Household textiles	58.6	74.76	68.51	66.23	64.84	-2.1	-5.4	-13.3	-8.4
Household appliances	246.0	101.64	112.65	92.05	97.95	6.4	-13.1	-3.6	-4.4
Glassware, tableware and household utensils	17.2	57.60	60.96	61.99	55.54	-10.4	-8.9	-3.6	-16.0
Tools and equipment for house and garden	58.2	151.62	140.37	110.47	118.52	7.3	-15.6	-21.8	-2.4
Goods and services for routine household maintenance and cleaning	420.5	109.29	109.83	113.82	113.91	0.1	3.7	4.2	5.0
Health	223.1	97.63	103.40	101.05	100.99	-0.1	-2.3	3.4	2.6
Medical products, appliances and equipment	152.3	93.23	101.98	98.51	97.00	-1.5	-4.9	4.0	2.8
Out-patient services	52.4	108.01	107.85	108.56	109.53	0.9	1.6	1.4	2.3
Other treatments	7.8	101.54	100.67	100.38	101.14	0.8	0.5	-0.4	1.1
Health products and services n.e.c.	10.5	106.55	103.87	100.71	115.97	15.2	11.6	8.8	3.7
Transport	1,257.4	110.23	108.86	113.79	114.13	0.3	4.8	3.5	-5.0
Purchase of vehicles	442.6	97.91	100.39	107.00	108.33	1.2	7.9	10.6	-14.0
Operation of personal transport equipment	763.3	118.89	115.03	119.94	119.22	-0.6	3.6	0.3	0.4
Transport services	51.5	87.79	90.26	81.05	88.62	9.3	-1.8	0.9	-10.2
Communications	849.6	105.42	111.53	112.34	111.60	-0.7	0.1	5.9	15.9
Telephone and telefax equipment	43.8	79.92	78.96	94.72	80.40	-15.1	1.8	0.6	0.0
Telephone and telefax services	805.8	106.80	113.30	113.30	113.30	0.0	0.0	6.1	16.6
Recreation and culture	1,013.3	94.55	100.02	94.36	94.98	0.7	-5.0	0.5	-2.0
Audio-visual, photographic and information processing equipment	58.5	78.28	71.18	71.97	76.47	6.3	7.4	-2.3	-10.7
Other major durables for recreation and culture	20.0	95.34	94.16	102.88	102.55	-0.3	8.9	7.6	0.8
Other recreational items and equipment; gardens and pets	266.6	105.45	111.42	110.61	108.93	-1.5	-2.2	3.3	2.1
Recreational and cultural services	309.1	101.48	102.10	102.27	102.27	0.0	0.2	0.8	-0.3
Newspapers, books and stationery	43.7	91.54	90.64	81.71	83.71	2.4	-7.6	-8.6	-1.9
Holidays	315.4	81.95	95.35	78.24	80.56	3.0	-15.5	-1.7	-6.7
Education	98.0	105.12	131.23	131.23	131.23	0.0	0.0	24.8	24.5
Pre primary and primary education	24.0	100.00	142.86	142.86	142.86	0.0	0.0	42.9	42.9
Secondary education	43.4	110.44	145.73	145.73	145.73	0.0	0.0	32.0	31.0
Post-secondary non-tertiary education	4.6	100.00	100.00	100.00	100.00	0.0	0.0	0.0	0.0
Tertiary education	23.6	100.00	100.00	100.00	100.00	0.0	0.0	0.0	0.0
Education not definable by level	2.5	120.00	120.00	120.00	120.00	0.0	0.0	0.0	4.9
Restaurants and hotels	442.0	116.69	119.15	122.66	123.62	0.8	3.8	5.9	5.8
Catering services	429.8	118.65	120.95	122.91	122.91	0.0	1.6	3.6	5.7
Accommodation services	12.2	47.60	55.62	113.52	148.44	30.8	166.9	211.9	10.9
Miscellaneous goods and services	1,222.6	103.77	104.93	105.87	106.22	0.3	1.2	2.4	2.8
Personal care	427.1	103.11	105.17	105.80	106.76	0.9	1.5	3.5	4.5
Personal effects n.e.c.	106.6	104.28	108.68	116.96	117.17	0.2	7.8	12.4	12.0
Social protection	78.2	133.33	133.33	133.33	133.33	0.0	0.0	0.0	2.1
Insurance	610.7	100.36	100.46	100.46	100.46	0.0	0.0	0.1	0.2
CPI	10,000.0	106.20	108.79	108.72	109.20	0.4	0.4	2.8	1.8

Source: Central Bureau of Statistics Aruba

The Period average (last 24 months) change is calculated by comparing the average index for the most recent 12-month period compared with the average index of the preceding 12-month period.

APPENDIX 2

Effect on the Consumer Price Index per sector and category for July 2024, Total Population (Jun 2019 = 100)

DESCRIPTION	WEIGHT coefficient	Monthly Jun - Jul	Ytd Dec - Jul	End of period Jul 23 - Jul 24 12 months	Period average Jul 22/23 - Jul 23/24 24 months
Food and non-alcoholic beverages	1,087.7	0.07	0.18	0.32	0.32
Food	964.1	0.06	0.15	0.27	0.25
Non-alcoholic beverages	123.6	0.01	0.03	0.05	0.07
Alcoholic beverages and tobacco	78.2	0.00	0.01	0.00	0.02
Alcoholic beverages for consumption at home	62.2	0.00	0.00	0.00	0.01
Tobacco	16.0	0.00	0.00	0.00	0.01
Clothing and footwear	276.8	0.04	-0.09	0.07	-0.07
Clothing	212.8	0.08	-0.05	0.06	-0.07
Footwear	64.0	-0.04	-0.05	0.01	0.00
Housing	2,522.2	0.06	0.13	0.75	0.37
Actual rentals for housing	666.7	0.01	0.06	0.10	0.10
Imputed rentals for housing	34.4	0.00	0.00	0.00	0.00
Maintenance and repair of the dwelling	517.0	0.06	0.08	0.65	0.64
Water supply and miscellaneous services relating to the dwelling	463.6	0.00	0.00	0.00	0.04
Electricity, gas and other fuels	840.4	0.00	0.00	0.00	-0.41
Household operation	929.2	0.14	-0.27	-0.21	0.00
Furniture, furnishings, carpets and other floor coverings	128.8	-0.02	0.05	-0.07	-0.03
Household textiles	58.6	-0.01	-0.02	-0.05	-0.04
Household appliances	246.0	0.13	-0.33	-0.09	-0.11
Glassware, tableware and household utensils	17.2	-0.01	-0.01	0.00	-0.02
Tools and equipment for house and garden	58.2	0.04	-0.12	-0.18	-0.02
Goods and services for routine household maintenance and cleaning	420.5	0.00	0.16	0.18	0.21
Health	223.1	0.00	-0.05	0.07	0.05
Medical products, appliances and equipment	152.3	-0.02	-0.07	0.05	0.04
Out-patient services	52.4	0.00	0.01	0.01	0.01
Other treatments	7.8	0.00	0.00	0.00	0.00
Health products and services n.e.c.	10.5	0.01	0.01	0.01	0.00
Transport	1,257.4	0.04	0.61	0.46	-0.70
Purchase of vehicles	442.6	0.05	0.32	0.43	-0.69
Operation of personal transport equipment	763.3	-0.05	0.29	0.02	0.04
Transport services	51.5	0.04	-0.01	0.00	-0.05
Communications	849.6	-0.06	0.01	0.49	1.20
Telephone and telefax equipment	43.8	-0.06	0.01	0.00	0.00
Telephone and telefax services	805.8	0.00	0.00	0.49	1.20
Recreation and culture	1,013.3	0.06	-0.47	0.04	-0.18
Audio-visual, photographic and information processing equipment	58.5	0.02	0.03	-0.01	-0.05
Other major durables for recreation and culture	20.0	0.00	0.02	0.01	0.00
Other recreational items and equipment; gardens and pets	266.6	-0.04	-0.06	0.09	0.06
Recreational and cultural services	309.1	0.00	0.00	0.02	-0.01
Newspapers, books and stationery	43.7	0.01	-0.03	-0.03	-0.01
Holidays	315.4	0.07	-0.43	-0.04	-0.18
Education	98.0	0.00	0.00	0.24	0.24
Pre primary and primary education	24.0	0.00	0.00	0.10	0.10
Secondary education	43.4	0.00	0.00	0.14	0.14
Post-secondary non-tertiary education	4.6	0.00	0.00	0.00	0.00
Tertiary education	23.6	0.00	0.00	0.00	0.00
Education not definable by level	2.5	0.00	0.00	0.00	0.00
Restaurants and hotels	442.0	0.04	0.18	0.29	0.27
Catering services	429.8	0.00	0.08	0.17	0.27
Accommodation services	12.2	0.04	0.10	0.12	0.01
Miscellaneous goods and services	1,222.6	0.04	0.15	0.28	0.33
Personal care	427.1	0.04	0.06	0.15	0.18
Personal effects n.e.c.	106.6	0.00	0.08	0.13	0.12
Social protection	78.2	0.00	0.00	0.00	0.02
Insurance	610.7	0.00	0.00	0.01	0.01
CPI	10,000.0	0.43	0.38	2.82	1.84

Source: Central Bureau of Statistics Aruba

APPENDIX 3

Monthly & Yearly Changes (%) and effect in the Food & catering services for July 2024, Total Population (Jun 2019 = 100)

DESCRIPTION	WEIGHT coefficient	% Change		Effect	
		Monthly Jun - Jul	End of period Jul 23 - Jul 24 12 months	Monthly Jun - Jul	End of period Jul 23 - Jul 24 12 months
Food & catering services	1,517.5	0.4	3.0	0.073	0.497
Food at home	1,087.7	0.6	2.8	0.073	0.325
Bread and cereals	178.1	-0.1	2.8	-0.001	0.056
Rice	23.5	-2.1	-0.3	-0.007	-0.001
Bread	72.1	0.1	1.8	0.000	0.014
Pasta products	9.2	-0.4	2.6	0.000	0.003
Other cereals and cereal products	73.3	0.7	5.2	0.005	0.040
Meat	242.5	0.5	2.0	0.014	0.054
Bovine	67.3	0.2	-1.6	0.002	-0.012
Swine	25.5	-0.3	-1.1	-0.001	-0.003
Poultry	75.7	0.8	7.7	0.007	0.063
Other meat and meat preparations	74.0	0.8	0.7	0.007	0.006
Fish and other seafood	49.0	2.3	-1.4	0.011	-0.007
Fish and seafood preparations	49.0	2.3	-1.4	0.011	-0.007
Milk, cheese and eggs	135.3	0.8	2.8	0.013	0.044
Cheese	55.4	0.6	1.5	0.004	0.009
Eggs	16.6	6.2	22.9	0.015	0.050
Milk	40.0	-1.4	-2.2	-0.006	-0.010
Other milk products	23.3	0.1	-2.1	0.000	-0.005
Oils and fats	32.2	-0.9	-3.5	-0.003	-0.013
Corn oil	2.8	-1.8	-8.1	-0.001	-0.003
Butter and margarine	9.2	2.5	1.4	0.002	0.001
Other oils and fats	20.1	-2.0	-4.6	-0.005	-0.011
Fruit	97.6	-1.5	4.8	-0.014	0.044
Oranges	9.4	-0.5	8.9	-0.001	0.010
Bananas and plantains	19.9	3.2	9.8	0.005	0.014
Apples	9.3	-4.1	-3.3	-0.004	-0.003
Avocado	5.0	-1.0	28.3	-0.001	0.011
Grapes	9.2	-5.7	0.8	-0.006	0.001
Nuts	11.9	-0.7	0.5	-0.001	0.001
Lemons and mandarins	6.0	3.7	-1.2	0.001	0.000
Cherries and strawberries	8.8	-2.4	7.7	-0.003	0.008
Melons and watermelons	7.7	0.5	1.9	0.000	0.001
Papayas and pineapples	6.9	-5.5	3.5	-0.003	0.002
Other fruits and fruit products	3.5	-7.3	1.8	-0.003	0.001
Potatoes and other tubers	18.2	8.6	1.4	0.012	0.002
Potatoes	12.2	13.7	2.5	0.010	0.002
Other tubers	2.0	0.9	2.2	0.000	0.001
Sweet potatoes and yucca	4.0	4.1	-1.3	0.002	-0.001
Vegetables	89.1	2.2	2.9	0.018	0.024
Lettuce	6.8	-27.5	5.2	-0.010	0.001
Tomatoes	9.7	-0.3	7.8	0.000	0.007
Onions and garlic	18.7	-1.1	-5.0	-0.002	-0.009
Celery and broccoli	15.3	23.9	17.6	0.028	0.022
Other vegetables	15.3	0.7	-4.9	0.001	-0.007
Other preserved or processed vegetables	8.4	-0.6	2.3	-0.001	0.002
Frozen vegetable mixtures	14.8	0.9	3.9	0.001	0.006
Sugar, jam, honey and other confectionery	42.0	0.3	6.3	0.001	0.030
Sugar	12.1	0.4	11.3	0.001	0.018
Jams and jellies	2.5	0.1	4.9	0.000	0.001
Other confectionery products	27.5	0.2	3.8	0.001	0.012
Food products n.e.c.	80.1	1.4	4.6	0.012	0.041
Other food products	80.1	1.4	4.6	0.012	0.041
Non-alcoholic beverages	123.6	0.7	3.7	0.010	0.051
Coffee and tea	20.9	0.9	2.6	0.002	0.006
Other non-alcoholic beverages	14.6	0.2	5.9	0.000	0.009
Soft and sports drinks	31.0	-0.3	2.1	-0.001	0.007
Fruit juices	57.1	1.3	4.5	0.008	0.029
Food away from home	429.8	0.0	3.6	0.000	0.172
Food and beverage consumption away from home	429.8	0.0	3.6	0.000	0.172
Other goods and services	8,482.5	0.4	2.8	0.361	2.320
Other goods	4,735.8	0.2	2.1	0.078	0.996
Other services	3,746.7	0.8	3.6	0.283	1.324
CPI	10,000	0.4	2.8	0.434	2.817

Source: Central Bureau of Statistics Aruba

APPENDIX 4

Overview of the Consumer Price Index (CPI), 2023 - 2024 (Jun 2019 = 100)

	Base				YEAR: 2024				YEAR: 2023			
	Base	Base	Base	Base	CHANGE				CHANGE			
	Jun-19	Jun-19	Jun-19	Jun-19	Monthly	Year-to	Yearly	Period	Monthly	Year-to	Yearly	Period
=100.0	=100.0	=100.0	=100.0		date	12 months	24 months		date	12 months	24 months	
	<u>Jan.'23</u>	<u>Dec.'22</u>	<u>Jan.'24</u>	<u>Dec.'23</u>								
<u>Total Population</u>	106.69	106.37	108.31	108.79	-0.4	-0.4	1.5	2.9	0.3	0.3	6.6	5.8
Low Income	106.78	106.44	109.03	109.37	-0.3	-0.3	2.1		0.3	0.3	7.0	
High Income	106.63	106.32	107.96	108.48	-0.5	-0.5	1.3		0.3	0.3	6.4	
	<u>Feb.'23</u>	<u>Jan.'23</u>	<u>Feb.'24</u>	<u>Jan.'24</u>								
<u>Total Population</u>	107.59	106.69	108.57	108.31	0.2	-0.2	0.9	2.4	0.8	1.1	7.1	6.1
Low Income	107.69	106.78	109.29	109.03	0.2	-0.1	1.5		0.9	1.2	7.4	
High Income	107.52	106.63	108.20	107.96	0.2	-0.3	0.6		0.8	1.1	7.0	
	<u>Mar.'23</u>	<u>Feb.'23</u>	<u>Mar.'24</u>	<u>Feb.'24</u>								
<u>Total Population</u>	107.47	107.59	109.37	108.57	0.7	0.5	1.8	2.1	-0.1	1.0	5.9	6.2
Low Income	107.46	107.69	109.97	109.29	0.6	0.5	2.3		-0.2	1.0	6.4	
High Income	107.45	107.52	109.05	108.20	0.8	0.5	1.5		-0.1	1.1	5.7	
	<u>Apr.'23</u>	<u>Mar.'23</u>	<u>Apr.'24</u>	<u>Mar.'24</u>								
<u>Total Population</u>	107.12	107.47	109.45	109.37	0.1	0.6	2.2	1.9	-0.3	0.7	4.9	6.3
Low Income	107.31	107.46	109.87	109.97	-0.1	0.5	2.4		-0.1	0.8	5.6	
High Income	107.00	107.45	109.25	109.05	0.2	0.7	2.1		-0.4	0.6	4.5	
	<u>May'23</u>	<u>Apr.'23</u>	<u>May'24</u>	<u>Apr.'24</u>								
<u>Total Population</u>	106.60	107.12	109.41	109.45	-0.03	0.6	2.6	1.8	-0.5	0.2	4.0	6.1
Low Income	106.77	107.31	109.92	109.87	0.05	0.5	2.9		-0.5	0.3	4.6	
High Income	106.49	107.00	109.14	109.25	-0.1	0.6	2.5		-0.5	0.2	3.7	
	<u>Jun'23</u>	<u>May'23</u>	<u>Jun'24</u>	<u>May'24</u>								
<u>Total Population</u>	106.20	106.60	108.72	109.41	-0.6	-0.1	2.4	1.7	-0.4	-0.2	2.8	5.9
Low Income	106.33	106.77	109.39	109.92	-0.5	0.0	2.9		-0.4	-0.1	3.3	
High Income	106.10	106.49	108.37	109.14	-0.7	-0.1	2.1		-0.4	-0.2	2.6	
	<u>Jul'23</u>	<u>Jun'23</u>	<u>Jul'24</u>	<u>Jun'24</u>								
<u>Total Population</u>	106.20	106.20	109.20	108.72	0.4	0.4	2.8	1.8	0.0	-0.2	1.7	5.6
Low Income	107.23	106.33	109.80	109.39	0.4	0.4	2.4		0.8	0.7	3.3	
High Income	105.68	106.10	108.87	108.37	0.5	0.4	3.0		-0.4	-0.6	0.9	
	<u>Aug.'23</u>	<u>Jul'23</u>	<u>Aug.'24</u>	<u>Jul'24</u>								
<u>Total Population</u>	106.94	106.20							0.7	0.5	0.5	4.9
Low Income	107.89	107.23							0.6	1.4	1.3	
High Income	106.45	105.68							0.7	0.1	0.0	
	<u>Sep.'23</u>	<u>Aug.'23</u>	<u>Sep.'24</u>	<u>Aug.'24</u>								
<u>Total Population</u>	108.00	106.94							1.0	1.5	1.7	4.5
Low Income	108.83	107.89							0.9	2.2	2.4	
High Income	107.57	106.45							1.1	1.2	1.3	
	<u>Oct.'23</u>	<u>Sep.'23</u>	<u>Oct.'24</u>	<u>Sep.'24</u>								
<u>Total Population</u>	108.14	108.00							0.1	1.7	1.7	4.1
Low Income	108.91	108.83							0.1	2.3	2.5	
High Income	107.75	107.57							0.2	1.3	1.4	
	<u>Nov.'23</u>	<u>Oct.'23</u>	<u>Nov.'24</u>	<u>Oct.'24</u>								
<u>Total Population</u>	108.34	108.14							0.2	1.8	1.7	3.7
Low Income	109.05	108.91							0.1	2.4	2.3	
High Income	107.97	107.75							0.2	1.6	1.4	
	<u>Dec.'23</u>	<u>Nov.'23</u>	<u>Dec.'24</u>	<u>Nov.'24</u>								
<u>Total Population</u>	108.79	108.34							0.4	2.3	2.3	3.4
Low Income	109.37	109.05							0.3	2.7	2.7	
High Income	108.48	107.97							0.5	2.0	2.0	

Source: Central Bureau of Statistics Aruba

APPENDIX 5

Prices of crude oil, utilities and gasoline, 2001 - 2024

Month	Crude Crude oil ¹	Electricity components					Water ⁵	Gasoline ⁶	Diesel ⁶
		Total energy charge ²			Fixed charge ³	Electricity ⁴			
		≤ 500 kWh	501 - 1000 kWh	> 1001 kWh					
Average 2001	26.01	24.59	22.09	22.09	0.00	172.79	89.40	128.34	90.10
Average 2002	26.06	24.89	22.39	22.39	0.00	174.91	90.82	127.20	88.68
Average 2003	34.49	27.02	24.52	24.52	0.00	190.38	99.21	139.21	100.18
Average 2004	41.31	27.18	24.68	24.68	0.00	191.57	100.02	152.51	113.05
Average 2005	56.36	31.10	28.60	28.60	0.00	219.97	113.69	167.74	136.04
Average 2006	66.12	35.91	33.41	33.41	0.00	254.88	128.70	176.22	149.77
Average 2007	72.08	36.59	34.09	34.09	0.00	259.84	133.59	200.43	168.38
Average 2008	99.87	45.67	43.17	43.17	0.00	325.67	161.80	228.19	214.48
Average 2009	61.46	37.33	34.83	34.83	0.00	265.17	139.60	175.15	142.53
Average 2010	79.22	43.92	41.42	41.42	0.00	312.98	159.21	193.43	163.22
Average 2011	94.74	47.58	47.57	47.57	0.00	345.14	177.47	229.48	203.46
Average 2012	94.25	47.68	51.21	53.46	0.00	353.85	171.13	235.53	210.07
Average 2013	98.00	41.10	44.90	58.40	0.00	306.75	137.05	229.48	205.83
Average 2014	93.49	42.58	45.32	57.77	0.63	315.71	137.05	224.24	200.21
Average 2015	48.71	47.02	46.56	55.87	2.50	342.59	137.05	179.74	147.80
Average 2016	43.17	40.40	41.80	47.64	12.50	308.76	137.05	165.87	131.12
Average 2017	50.85	34.52	35.72	45.93	12.50	265.65	137.05	180.79	147.69
Average 2018	65.08	34.52	35.72	45.93	12.50	265.65	137.05	204.95	177.59
Average 2019	56.84	34.52	35.72	45.93	12.50	265.65	137.05	202.67	176.53
Average 2020	39.25	31.09	31.99	42.09	12.50	240.09	137.05	177.93	143.26
Average 2021	67.78	31.09	31.99	42.09	12.50	240.09	137.05	223.34	181.95
Average 2022	95.16	34.19	35.18	46.29	12.50	262.78	150.17	275.90	263.17
January-23	78.01	38.53	39.65	52.16	12.50	294.56	168.73	243.80	246.60
February-23	76.99	38.53	39.65	52.16	12.50	294.56	168.73	262.50	260.30
March-23	73.51	38.53	39.65	52.16	12.50	294.56	168.73	257.60	234.80
April-23	79.51	38.53	39.65	52.16	12.50	294.56	168.73	262.40	231.50
May-23	71.86	35.80	36.84	48.47	12.50	274.57	168.73	266.70	221.50
June-23	70.12	35.80	36.84	48.47	12.50	274.57	168.73	255.90	209.10
July-23	75.57	35.80	36.84	48.47	12.50	274.57	168.73	256.40	212.50
August-23	81.34	35.80	36.84	48.47	12.50	274.57	168.73	268.80	225.60
September-23	88.11	35.80	36.84	48.47	12.50	274.57	168.73	283.70	251.70
October-23	85.94	35.80	36.84	48.47	12.50	274.57	168.73	277.90	260.80
November-23	78.48	35.80	36.84	48.47	12.50	274.57	168.73	248.60	247.80
December-23	72.61	35.80	36.84	48.47	12.50	274.57	168.73	237.70	227.20
Average 2023	77.67	36.71	37.78	49.70	12.50	281.24	168.73	260.17	235.78
January-24	73.56	35.80	36.84	48.47	12.50	274.57	168.73	232.90	213.60
February-24	76.93	35.80	36.84	48.47	12.50	274.57	168.73	245.40	227.80
March-24	81.01	35.80	36.84	48.47	12.50	274.57	168.73	255.60	236.40
April-24	85.50	35.80	36.84	48.47	12.50	274.57	168.73	266.90	230.10
May-24	80.31	35.80	36.84	48.47	12.50	274.57	168.73	269.00	228.20
June-24	79.89	35.80	36.84	48.47	12.50	274.57	168.73	257.60	217.70
July-24	82.57	35.80	36.84	48.47	12.50	274.57	168.73	251.60	218.50
August-24									
September-24									
October-24									
November-24									
December-24									
Average 2024	79.97	35.80	36.84	48.47	12.50	274.57	168.73	254.14	224.61

Source: Central Bureau of Statistics Aruba

¹ Average West Texas Intermediate (WTI) crude oil price per barrel in US\$ (Source: U.S. Energy Information Administration)

² Total energy charge in Afl. cents per kWh

³ Fixed charge was introduced in October 2014 at Afl. 2.50

⁴ Electricity price in Afl. is based on an average household usage of 725.5 kWh

⁵ Water price in Afl. is based on an average household usage

⁶ Gasoline and diesel prices in Afl. cents per liter

APPENDIX 6

